

# Who Cares for Kansas Children?

## Early Education Workforce Study

### 2010 State Child Care Profile



#### About this study

In 2010, the *Who Cares for Kansas Children? Early Education Workforce Study* was conducted.

**Early childhood professionals were surveyed** about their employment. Their responses were used to develop the *2010 Kansas Child Care Workforce Profile*.

**Families were surveyed** about the service they received after utilizing a child care resource and referral agency. Their responses, combined with other statistical resources, were used to create state, regional, and county profiles.

The result is a collection of reports (pictured above) that provides a detailed picture of the child care workforce and the families who need child care in Kansas.

#### Child care affects us all...

Child care in Kansas is more than a half billion dollar industry. Care must be affordable, accessible and of high quality so that families can work and businesses can grow — strengthening our economy and ensuring strong leaders for our future. Research shows that when children attend high-quality care, they are more successful in school.

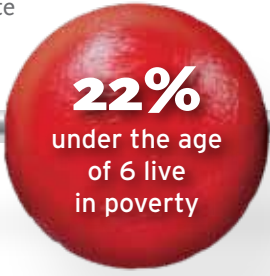
What is the reality?

Working families need care for their children and must stretch their budgets to meet the rising cost of care. Average child care for one infant and one preschooler is a staggering 20% of a Kansas family's median income. As a key component of the child care infrastructure, child care resource and referral (CCR&R) agencies improve the field of early education by providing critical services to Kansans which include:

- Helping families find high-quality child care
- Educating families, early childhood professionals, and the community about what quality child care looks like
- Supporting early childhood professionals through training and technical assistance

## Kansas Demographics

- 16% of children under age 18 live in poverty.
- Children ages 0-9 make up 14% of the total population of Kansas.
- 20% of family households with children under age 18 are headed by females.
- The majority of people are Caucasian (86%).
- The median family income is \$52,898.
- The average high school graduation rate is 91%.
- 13% of adults hold a Bachelor or higher degree.
- The average unemployment rate is 7%.



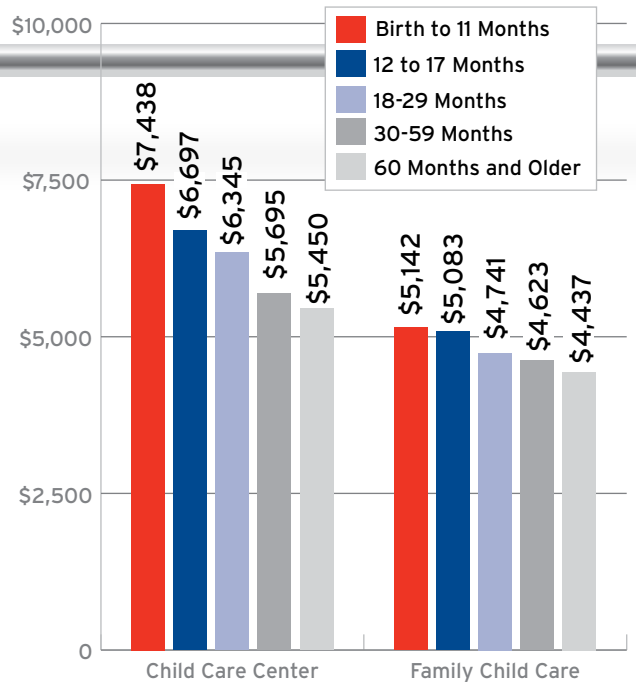
### Trends from the 2006 Workforce Study

|  |           |       |
|--|-----------|-------|
| 2010 Population                          | 2,853,118 | ↑ 4%  |
| 2006 Population                          | 2,735,502 |       |
| 2010 Children under 5 years              | 205,492   | ↓ 9%  |
| 2006 Children under 5 years              | 225,517   |       |
| 2010 Children under 18 living in poverty | 16%       | ↑ 2%  |
| 2006 Children under 18 living in poverty | 14%       |       |
| 2010 Families with working parents       | 76%       | ↑ 17% |
| 2006 Families with working parents       | 63%       |       |

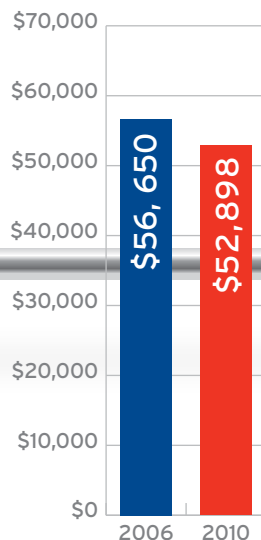
Note: "Families with working parents" equals a single parent home with one parent in labor force or a two-parent home with both parents in labor force.

## Affordability of Child Care

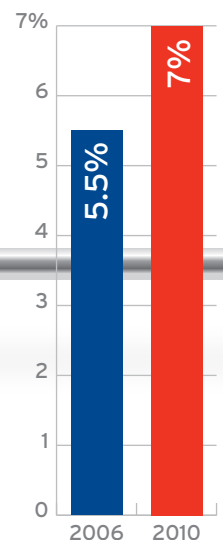
While the average cost of family child care in Kansas is typically less than the average cost of care in a center, child care continues to represent a substantial cost for families. The average annual cost of full-time care for an infant in a family child care home represents 9% of the state median family income. Annual cost of full-time infant care in a child care center represents 11% of the state median family income. The table below indicates the average annual cost of full-time care for one child by age and type of care.



### Average Annual Income



### Unemployment Rate



## Financial Support

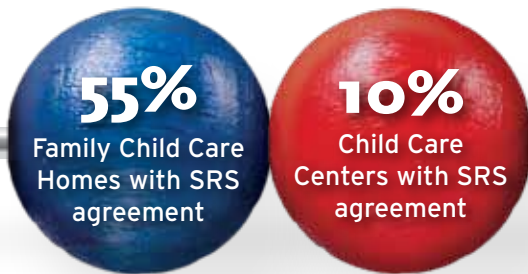
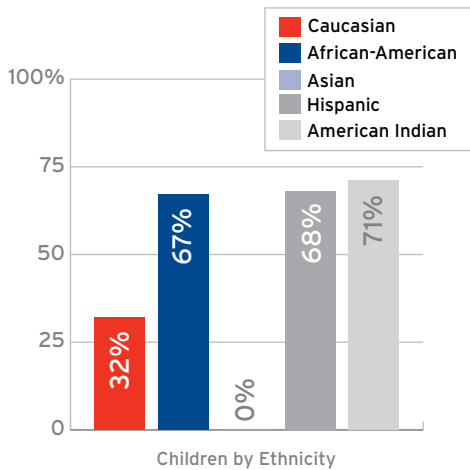
In an average month, infants and toddlers represent 40-45% of children receiving child care benefits from the Kansas Department of Social and Rehabilitation Services (SRS).

In 2010, the SRS income eligibility limit for a family of 3 in Kansas was \$33,876 (185% of the federal poverty level).

### SRS Benefit Participation

|   |        |
|---|--------|
| Average Number of Children served monthly       | 20,900 |
| Average Number of Families served monthly       | 10,741 |
| Children served in Center                       | 36%    |
| Children served in Family Child Care Home       | 47%    |
| Children served In Licensed/Regulated Care      | 83%    |
| Average co-payment as a share of monthly income | 6%     |

### Percent of Low-Income Children by Ethnicity



## Choosing Child Care

Thirty-one percent of families (impacting 4,663 children), contacting Child Care Aware® of Kansas requested facilities offering care outside of the typical Monday through Friday, 8 a.m. to 5 p.m. hours.

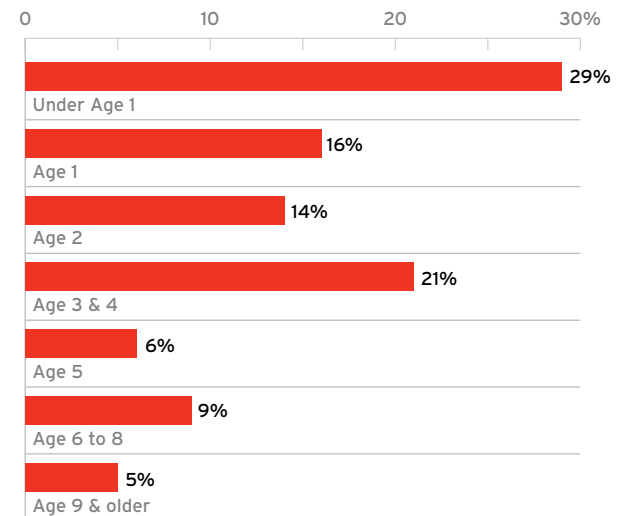
### What Families Want

Percentage of families rating the following criteria as very important when choosing child care:



### What Families Need

Of the children needing care, 80% are under the age of 5.



### Quality Initiatives Participation

|  | 2006 | 2010 |
|--|------|------|
| Early Childhood Associate Apprenticeship Program Apprentices | NA   | 84   |
| T.E.A.C.H. Early Childhood® Kansas participants              | 202  | 117  |
| Child Care WAGE\$® KANSAS participants                       | 642  | 280  |
| Kansas Quality Rating and Improvement System participants    | NA   | 128  |
| Family Child Care (NAFCC) accredited                         | 35   | 24   |
| Child Care Centers (NAEYC) accredited                        | 124  | 37   |
| School-Age Programs (NAA) accredited                         | 6    | 3    |

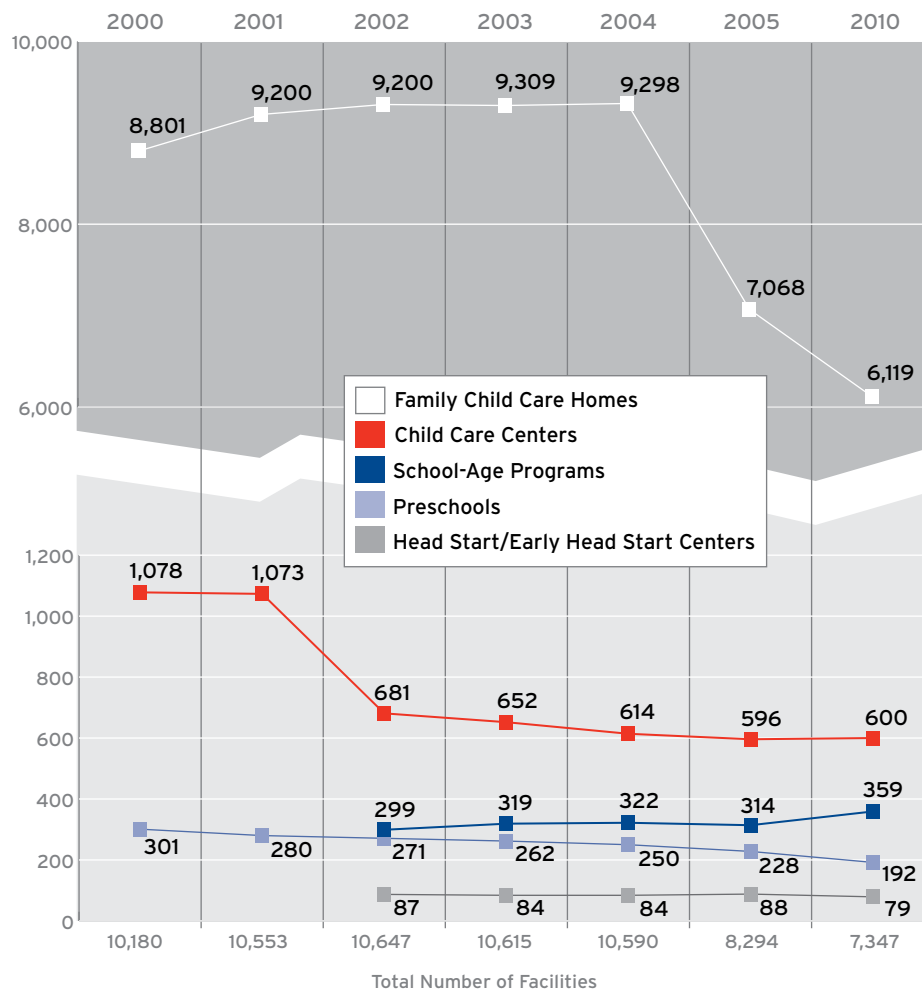
## Availability of Care

Over the past five years, Kansas has experienced a decrease of approximately 13% in family child care homes. While child care center facilities have increased by only 0.7%, the overall center capacity has increased by 7% showing a trend that centers are growing in size (not number of facilities).

Family child care homes account for 83% of licensed facilities and hold 44% of the child care capacity available.

Child care centers account for 8% of licensed facilities and hold 34% of the capacity.

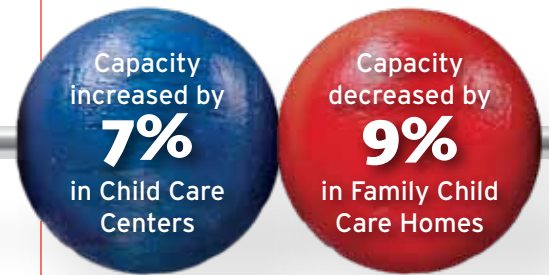
### Number of Facilities



### Capacity of Facilities

|                       | 2000           | 2001           | 2002           | 2003           | 2004           | 2005           | 2010           | % Change |
|-----------------------|----------------|----------------|----------------|----------------|----------------|----------------|----------------|----------|
| Family Child Care     | 64,377         | 62,275         | 63,049         | 62,401         | 61,220         | 63,601         | 57,982         | -9%      |
| Child Care Centers    | 59,520         | 59,840         | 42,219         | 41,331         | 40,630         | 41,445         | 44,535         | +7%      |
| School-Age Programs   | -              | -              | 16,304         | 18,859         | 18,366         | 20,218         | 25,558         | +26%     |
| Preschools            | -              | 6,200          | 5,882          | 5,708          | 5,576          | 4,957          | 2,156          | -57%     |
| Head Start/EHS*       | -              | -              | 2,640          | 2,706          | 2,652          | 2,676          | 2,582          | -9%      |
| <b>Total Capacity</b> | <b>123,897</b> | <b>128,315</b> | <b>130,094</b> | <b>131,005</b> | <b>128,444</b> | <b>132,897</b> | <b>132,813</b> |          |

\*EHS equals Early Head Start



### Resources:

- Child Care Aware® of Kansas
- CLASP Data Finder
- Kansas Department of Health and Environment
- Kansas Department of Labor
- Kansas Department of Social and Rehabilitation Services
- Kansas Department of Education
- National Association for Family Child Care
- National Association for the Education of Young Children
- National Center for Children in Poverty
- National Women's Law Center
- U.S. Census Bureau
- U.S. Department of Health and Human Services, Child Care and Development Fund Program Data Statistics
- U.S. Department of Housing and Urban Development
- U.S. Department of Labor, Bureau of Labor Statistics



PO Box 2294, Salina, KS 67402-2294  
877-678-2548 • www.ks.childcareaware.org



915 S.W. Harrison St., Topeka, KS 66612  
888-369-4777 • www.srs.ks.gov

Produced by Child Care Aware® of Kansas.  
Funded by the American Recovery and Reinvestment Act (ARRA) as administered by the Kansas Department of Social and Rehabilitation Services.

Publication Date: September 2011.