



Kansas' most trusted child care resource.

**REGION ONE • Toll free
855-750-3343**

Service Centers: Salina, Hays,
and Colby

**REGION TWO • Toll free
800-684-3962**

Service Center: Wichita

**REGION THREE • Toll free
877-678-2548**

Service Centers: Topeka,
and Lawrence

**REGION FOUR • Toll free
800-755-0838**

Service Center: Kansas City

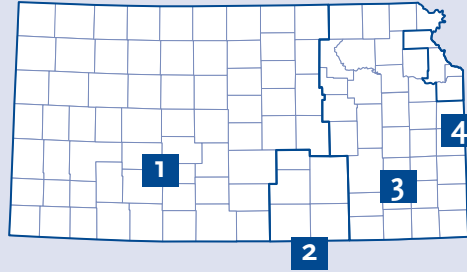
**FOR THE LATEST
PROFESSIONAL
DEVELOPMENT
OPPORTUNITIES
AROUND THE STATE...
CHECK OUT THE
ONLINE TRAINING
CALENDAR—
www.ks.childcareaware.org**

Child Care Aware® of Kansas

Toll free 1-855-750-3343
www.ks.childcareaware.org

Follow us on FACEBOOK,
TWITTER, YOUTUBE and
PINTEREST!

Child Care Aware® NEWS



SERVICE DELIVERY AREAS

Four Child Care Resource and Referral Agencies (CCR&Rs), located across Kansas, provide services to all 105 counties. Together, we offer many services for families, child care providers and community members.

Our resource center makes finding quality child care programs quick and easy for parents and families.

For child care providers and early learning staff, professional development opportunities and resources are available.

For local communities, supply and demand data paints the picture about child care.

These are just a few of our many services - for more details about all of the work we do, please contact your local CCR&R.

Play it Cool in the Summer

Summer is a time for fun! Barbeques, swimming, camping and other outdoor activities are a great way to spend time with family and friends. A few tips can help keep children safe and keep the fun times going!

- **Watch for heat exhaustion** - Symptoms may include nausea, vomiting, dizziness, fatigue, muscle cramping and confusion. If these occur, stop the activity, have the child lie down in a cool place and drink fluids. Seek medical care if symptoms do not stop or if the child's body temperature is 103° or higher.
- **Enjoy the sunshine safely** - Avoid the sun between 10 am and 3 pm. Have children wear hats, sunglasses, and clothing with tightly woven fabric. Use sunscreen with an SPF of 30 or higher that has both UVA and UVB protection for babies and children 6 months and older. Apply sunscreen 30 minutes before going outside and reapply every 2 hours, or every hour and a half if swimming (even with waterproof formulas). Infants younger than 6 months should stay in the shade.
- **Stay hydrated** - Depending on size and weight, children should drink between 4 and 10oz of water every 15 to 20 minutes. Keep drinks easily accessible to children, especially when playing outside.
- **Watch the greenery** - Learn to recognize the troublemakers:
 - Poison ivy grows as a vine or shrub in grass and on trees. It has three pointed, notched leaves per stem.
 - Poison oak grows as shrub and looks similar to poison ivy, but with rounded leaf tips.
 - Poison sumac grows as a tall shrub. The plant has 6-12 leaves that grow in pairs with a single leaf at the top of the stem.

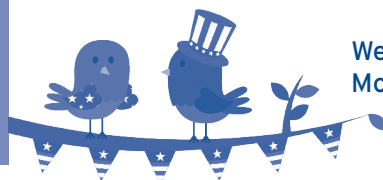
If these come into contact with skin, there is a window of about 10 minutes to wash away the rash-causing oil with soap and water. If a rash develops, talk with the child's pediatrician about using topical hydrocortisone and oral antihistamines to help soothe the itch.

For these and more summer safety tips, check out these resources:
<https://www.parents.com/baby/safety/outdoor/10-rules-for-summer-safety/>
<https://www.parenting.com/gallery/summer-safety-tips?page=4>



Offices Closed

Wednesday, July 4, 2018 (Holiday)
Monday, Sept. 3, 2018 (Holiday)



FAMILY FOCUS



Kansas' most trusted child care resource.

Fostering Social-Emotional Development in Young Children

Research confirms that early childhood experiences set the stage for later health, wellbeing and learning. Babies and young children, particularly at-risk children, need consistent, nurturing adults who are supportive and responsive. Nurturing relationships afford children the comfort, safety and confidence needed to form friendships, pay attention, communicate feelings and deal with challenges.

To successfully foster social-emotional development in children it must be a priority. Start by implementing some of these simple activities:

- Play social games and encourage turn-taking (peek-a-boo)
- Imitate child's facial expressions and sounds
- Communicate what you think a child is feeling (ex. "You look sad, Brian")
- Help children learn to calm themselves and praise positive behavior
- Get to know each child and follow their lead
- Provide opportunities for group activities
- Offer choices throughout the day

By building strong social-emotional foundations for babies and young children, they will be confident in their ability to explore and learn from the world around them. They will be better equipped to handle stress and persevere through difficult times in their lives and may experience later positive attitudes and behaviors, academic performance, career success and adult health outcomes.

For more information on the social-emotional development of young children, please check out these resources:

- Center on the Social and Emotional Foundations for Early Learning (CSEFEL)
<http://csefel.vanderbilt.edu/>
- Zero to Three - www.zerotothree.org



TEXT

Get info at your fingertips
text – KSKIDS to 59925



CALL

To receive a Child Care List
855-750-3343



SEARCH

Resources online at
www.ks.childcareaware.org



Professional Development Opportunities

To Register Call: 855-750-3343

Date	Title	Trainer	Time	Location	Hrs	Cost
7/7/2018	The Creative Curriculum for Infants, Toddlers, and Twos: Going Outdoors	Debb Homman	9:00 AM	Minneapolis Public Library- 519 Delia Avenue, Minneapolis	2	\$15
7/7/2018	Pediatric First Aid & CPR	Denise Singer	9:00 AM	St Catherines Hospital- 401 East Spruce Street, Garden City	4	\$50
7/11/2018	Power Up with Healthy Snacks	Rachel Jury	6:30 PM	Child Care Aware Hays Office- 1011B Centennial Blvd., Hays	2	\$15
7/17/2018	The Creative Curriculum for Infants, Toddlers, and Twos: Enjoying Stories and Books	Denise Singer	6:30 PM	St Catherines Hospital- 401 East Spruce Street, Garden City	2	\$15
7/17/2018	Healthy Environments: Disease Prevention and Control	Debb Homman	6:30 PM	Port Library- 1718 N Hersey, Beloit	2	\$15
7/19/2018	The Creative Curriculum for Preschool: Outdoor	Sherron French	6:30 PM	Barton County Community College, Room T-103-245 Northeast 30 Rd., Great Bend	3	\$24
7/21/2018	Get Outside, Learn Outside: Environmental Education for Early Childhood	Sherron French	8:30 AM	Dodge City Community College- 2501 North 14th Student Union, Dodge	6	\$45
7/26/2018	Pediatric First Aid & CPR- Cost \$20. Funded by United Way of McPherson County	Sherron French	6:00 PM	To Be Announced McPherson KS 67460	4	\$60
7/28/2018	The Creative Curriculum for Preschool: Block Play	Rachel Jury	9:00 AM	Child Care Aware Salina Office- 1508 E. Iron, Salina	2	\$15
8/2/2018	Pediatric First Aid & CPR	Denise Singer	6:00 PM	Colby Community College- 1255 S Range, Library Basement Rm 253, Colby	4	\$50
8/8/2018	The Creative Curriculum for Infants, Toddlers, and Twos: Connecting With Music and Movement	Denise Singer	6:30 PM	Colby Community College- 1255 S Range, Library Basement Rm 253, Colby	2	\$15
8/11/2018	Partnering with Parents- This training is FREE to Dickinson County Providers - Funded by Quality of Life Coalition	Bobbie Coopriider	9:00 AM	To Be Announced Abilene KS 67410	4	\$30
8/14/2018	Scaffolding Learning	Sherron French	6:30 PM	First National Bank- 101 C Street, Washington	2	\$15
8/21/2018	Pediatric First Aid & CPR	Sherron French	6:00 PM	Child Care Aware Salina Office- 1508 E. Iron, Salina	4	\$60
9/11/2018	Fostering Children's Thinking	Denise Singer	6:30 PM	Child Care Aware Hays Office- 1011B Centennial Blvd., Hays	2	\$15
9/17/2018	Better Brains for Babies: Brain Anatomy, Brain Development, Foundations for Learning, and Physical Well-Being Session 1	Sherron French	6:30 PM	Child Care Aware Salina Office- 1508 E. Iron, Salina	3	\$24
9/22/2018	Pediatric First Aid & CPR	Denise Singer	9:00 AM	Child Care Aware Hays Office- 1011B Centennial Blvd., Hays	4	\$45

Call 785-823-3343 to register & pay for the training. Registration & payment MUST be received one week prior to training date. Walk-ins are welcome but will be charged an additional \$5 registration fee. Cancellation notice is required 5 days prior to training date to receive a full refund.

Pediatric CPR and First Aid

Sign up now for a Pediatric First Aid and CPR training! The course qualifies for 4 KDHE-approved hours and successful completion earns a certification card valid for 2 years. Cost includes the required workbook.

Training Dates Available:

- July 7 in Garden City (\$50)
- July 26 in McPherson (Only \$20 for McPherson County Providers through a United Way of McPherson County grant--all others \$60)
- August 2 in Colby (\$50)
- August 21 in Salina (\$60)
- September 22 in Hays (\$45)



**Region
ONE**

REGIONAL NEWS

Partnering with Parents

August 11th 9 am to 1 pm, Abilene, Kansas (Location to be determined)

Join us for an overview of Adverse Childhood Experiences (ACEs). Learn how the brain reacts to trauma, how children in trauma may look and/or act, the impact of ACEs on health, how fostering resilience helps build hope, and how to support the children and families in trauma.

- Free to all Dickinson County Providers, funded by the Quality of Life Coalition
- Cost is \$30 for providers who provide care outside of Dickinson County.
- All participants MUST register before August 1, 2018. To register, please call 1-855-750-3343.



REGIONAL STAFF DIRECTORY

KENDRA PRATT
Regional Services Manager

SHERRON FRENCH
Regional Services Coordinator

DEBB HOMMAN
Early Care & Education Specialist

RACHEL JURY
Early Care & Education Specialist

DENISE SINGER
Early Care & Education Specialist

SUSAN PEARSON
Links to Quality Community Consultant

CHRISTI WICKS
Early Childhood Consultant

MEGAN BECKLEY
Data Clerk

Lending Library Services

When planning for your school year, be sure to check out our Lending Library Resources! Learning activity totes and bags and curriculum resources are located in our Salina, Hays and Colby offices. Call to schedule a time to pick up a resource or two!
1-800-750-3343

Getting Rid of “Make Me” Language

We’ve all found ourselves saying, “Don’t make me take that toy away!” Or “(insert event or person) made me mad!” Using “make me” language is saying that you have given the other person, event, or item power over you and you have declared yourself a victim. Conscious Discipline refers to this as “The Power of Free Will.” In her book, *Conscious Discipline: Building Resilient Classrooms*, Dr. Becky Bailey states, “the power of free will means that I am in charge of me and I’m the only person who can make myself change. It also means that you are in charge of you and you are the only person who can make yourself change.”

This does not mean that you are not allowed to feel the way you are feeling after an event. We are all allowed to feel angry, upset, happy, etc. when different events occur. We just need to shift the focus from being powerless in the world to having power over ourselves.

Here are some suggestions of how you could shift phrases from “make me” language to an empowered statement:



Instead of...	Say...
“Don’t make me take that toy away!”	“I’m going to hold the toy until we can decide together who gets to play with it first.”
“He made me mad when he hit me!”	“I feel mad when I get hit.”
“Look how you made your friend feel.”	“Look at her face. Her face is saying that she is sad.”

Professional Development Opportunities

Costs listed are for Child Start Members that have pre-registered; if not a Member, please call. 800-684-3962.

Date	Title	Trainer	Time	Location	Hrs	Fees
7/7/2018	Basic Child Development Including Supervision of Children	Tanya Bulluck	9:00 AM	Child Start- 1002 S. Oliver, Wichita	2	\$12
7/7/2018	Safe Slumber: Creating a Safe Sleep Environment	Tanya Bulluck	11:30 AM	Child Start- 1002 S. Oliver, Wichita	2	\$12
7/7/2018	Child Abuse, Neglect, Reporting and Abusive Head Trauma	Tanya Bulluck	1:45 PM	Child Start- 1002 S. Oliver, Wichita	2	\$12
7/9/2018	Signs & Symptoms of Childhood Illnesses	Mike Ferguson	7:00 PM	Child Start- 1002 S. Oliver, Wichita	1	\$6
7/12/2018	Emergency Preparedness for Child Care Providers	Caroline Teter	7:00 PM	Child Start- 1002 S. Oliver, Wichita	2	\$12
7/14/2018	Adult CPR/AED, Pediatric CPR and First Aid (316)683-2645	Mike Ferguson	9:00 AM	Child Start- 1002 S. Oliver, Wichita	6	Call
7/19/2018	Happy Meals: Safe Food Practices and Allergy Awareness	Tanya Bulluck	7:00 PM	Child Start- 1002 S. Oliver, Wichita	2	\$12
7/21/2018	Adding Wellness to Your Wheelhouse	Kande Jones	9:00 AM	Child Start- 1002 S. Oliver, Wichita	2	\$12
7/28/2018	Adult CPR/AED, Pediatric CPR and First Aid (316)683-2645	Mike Ferguson	9:00 AM	Child Start- 1002 S. Oliver, Wichita	6	Call
7/31/2018	Supporting Constructive Play in the Wild	Caroline Teter	7:00 PM	Child Start- 1002 S. Oliver, Wichita	2	\$12
8/6/2018	Signs & Symptoms of Childhood Illnesses	Mike Ferguson	7:00 PM	Child Start- 1002 S. Oliver, Wichita	1	\$6
8/7/2018	Medication Administration in Child Care	Caroline Teter	7:00 PM	Child Start- 1002 S. Oliver, Wichita	2	\$12
8/9/2018	Keeping Children Safe: Environment and Transportation Safety	Tanya Bulluck	7:00 PM	Child Start- 1002 S. Oliver, Wichita	2	\$12
8/11/2018	Adult CPR/AED, Pediatric CPR and First Aid (316)683-2645	Mike Ferguson	9:00 AM	Child Start- 1002 S. Oliver, Wichita	6	Call
8/16/2018	Play and the Outdoors: What's New Under the Sun?	Caroline Teter	7:00 PM	Child Start- 1002 S. Oliver, Wichita	2	\$12
8/21/2018	Fostering Children's Thinking	Caroline Teter	7:00 PM	Child Start- 1002 S. Oliver, Wichita	2	\$12
8/25/2018	Adult CPR/AED, Pediatric CPR and First Aid	Mike Ferguson	9:00 AM	Child Start- 1002 S. Oliver, Wichita	6	Call
8/25/2018	Basic Child Development Including Supervision of Children	Caroline Teter	9:00 AM	Child Start- 1002 S. Oliver, Wichita	2	\$12
8/25/2018	Safe Slumber: Creating a Safe Sleep Environment	Caroline Teter	11:30 AM	Child Start- 1002 S. Oliver, Wichita	2	\$12
8/25/2018	Child Abuse, Neglect, Reporting and Abusive Head Trauma	Caroline Teter	1:45 PM	Child Start- 1002 S. Oliver, Wichita	2	\$12
9/6/2018	Happy Meals: Safe Food Practices and Allergy Awareness	Tanya Bulluck	7:00 PM	Child Start- 1002 S. Oliver, Wichita	2	\$12
9/8/2018	Adult CPR/AED, Pediatric CPR and First Aid (316)683-2645	Mike Ferguson	9:00 AM	Child Start- 1002 S. Oliver, Wichita	6	Call
9/10/2018	Signs & Symptoms of Childhood Illnesses	Mike Ferguson	7:00 PM	Child Start- 1002 S. Oliver, Wichita	1	\$6
9/11/2018	Emergency Preparedness for Child Care Providers	Caroline Teter	7:00 PM	Child Start- 1002 S. Oliver, Wichita	2	\$12
9/20/2018	Parent Cafes	Caroline Teter	7:00 PM	Child Start- 1002 S. Oliver, Wichita	2	\$12
9/22/2018	Adult CPR/AED, Pediatric CPR and First Aid (316)683-2645	Mike Ferguson	9:00 AM	Child Start- 1002 S. Oliver, Wichita	6	Call
9/22/2018	Basic Child Development Including Supervision of Children	Tanya Bulluck	9:00 AM	Child Start- 1002 S. Oliver, Wichita	2	\$12
9/22/2018	Safe Slumber: Creating a Safe Sleep Environment	Tanya Bulluck	11:30 AM	Child Start- 1002 S. Oliver, Wichita	2	\$12
9/22/2018	Child Abuse, Neglect, Reporting and Abusive Head Trauma	Tanya Bulluck	1:45 PM	Child Start- 1002 S. Oliver, Wichita	2	\$12
9/27/2018	Nature Swap: Art Tools Go Green	Caroline Teter	7:00 PM	Child Start- 1002 S. Oliver, Wichita	2	\$12

2018 Members pay \$12, Non-members pay \$20.00. Additional \$3 fee for walk-ins.

Purchase a 2018 Professional Development Membership!

Members save 40% on most trainings in Butler, Cowley, Harvey, Sedgwick and Sumner counties! Additionally, members save on CPR courses through LifeSaver Learning, can schedule private trainings to be held at your child care center, receive free presentation events called Journey on the Go, access the Resource Library and much more!

Visit www.childstart.org for more information!



Save Money by Registering in Advance!

Did you know that you can register and pay before the class and save \$3.00? You can pay over the phone or online. Same-day walk-in attendees (without a paid reservation) will be charged the \$3.00 as part of their registration fee.

Please Note!

To register for trainings or to see non-member pricing, visit our website at www.childstart.org or call us at 800-684-3962.

Region

TWO

Quality Cruises

Join the fun! Saturday, September 15, 2018 from 9:00 am - 12:00 pm



REGIONAL NEWS



Quality Cruises is a fun-filled day cruising from one quality child care facility to another in the comfort of a party bus. All riders will get to tour three facilities, receive 2 hours in-service training while riding the bus, win awards, enjoy light refreshments and more!

Learn more at <https://qualitycruisesfall2018.eventbrite.com> and follow us on Facebook @ChildStartCCRR for more information!

REGIONAL STAFF DIRECTORY

MARILEE HANEY - Program Assistant Director
mhaney@childstart.org

TANYA BULLUCK - Special Projects Coordinator
tbulluck@childstart.org

CAROLINE TETER - Early Childhood Specialist
cteter@childstart.org

CANDACE MALONE - Data Specialist
cmalone@childstart.org

KENYA HAGEMAN - Data Clerk
khageman@childstart.org

Region

THREE

Professional Development Opportunities

To Register Visit: <http://east.ks.childcareaware.org>

Date	Title	Trainer	Time	Location	Hrs	Cost
7/2/2018	Learn to Play, Play to Learn- Free to Literacy Connections participants.	Michelle Gilbert	6:30 PM	Child Care Aware Topeka Office- 1100 SW Wanamaker Rd., # 201, Topeka	2	\$12
7/7/2018	Foundations of Quality Child Care, Part 1	Rebecca Quigley	8:00 AM	Child Care Aware Topeka Office- 1100 SW Wanamaker Rd., # 201, Topeka	6	*\$30
7/10/2018	Schedules, Routines, and Transitions- Free to Literacy Connections participants.	Grace Cott	6:30 PM	Child Care Aware Topeka Office- 1100 SW Wanamaker Rd., # 201, Topeka	2	\$12
7/11/2018	Supporting and Engaging Families- Free to Literacy Connections participants.	Michelle Gilbert	6:30 PM	Child Care Aware Topeka Office- 1100 SW Wanamaker Rd., # 201, Topeka	2	\$12
7/12/2018	Director's Toolbox: Money Management	Reva Wywadis & Michelle Gilbert	1:00 PM	Child Care Aware Topeka Office- 1100 SW Wanamaker Rd., # 201, Topeka	3	\$5
7/12/2018	Toddler Development- Free to Literacy Connections participants.	Rebecca Quigley	6:30 PM	Child Care Aware Topeka Office- 1100 SW Wanamaker Rd., # 201, Topeka	2	\$12
7/17/2018	Literacy Through the Day: Language and Vocabulary- Free to Literacy Connections participants.	Michelle Gilbert	6:30 PM	Child Care Aware Topeka Office- 1100 SW Wanamaker Rd., # 201, Topeka	2	\$12
7/19/2018	Darkness to Light Stewards of Children	Rachelle Rake	6:30 PM	Child Care Aware Topeka Office- 1100 SW Wanamaker Rd., # 201, Topeka	2	Free
7/20/2018	Mindfulness Practices for Children and Adults- Free to Literacy Connections participants.	Michelle Gilbert	4:00 PM	Child Care Aware Topeka Office- 1100 SW Wanamaker Rd., # 201, Topeka	2	\$12
7/21/2018	Foundations of Quality Child Care, Part 2	Hope Williams	9:00 AM	Child Care Aware Topeka Office- 1100 SW Wanamaker Rd., # 201, Topeka	6	*\$30
7/24/2018	Sensory Play: Going Beyond the Sand and Water- Free to Literacy Connections participants.	Karen Rogenmoser	6:30 PM	Child Care Aware Topeka Office- 1100 SW Wanamaker Rd., # 201, Topeka	2	\$12
7/25/2018	Using Books to Support Social Emotional Development- Free to Literacy Connections participants.	Michelle Gilbert	6:30 PM	Child Care Aware Topeka Office- 1100 SW Wanamaker Rd., # 201, Topeka	2	\$12
7/25/2018	Nap Time: Get Real!- Free to United Way of Douglas County programs.	Marie Treichel	6:30 PM	United Way of Douglas County Building- 2518 Ridge Court, Lawrence	2	\$12
7/26/2018	Child-Centered Teaching and Learning- Free to Literacy Connections participants.	Hope Williams	6:00 PM	Child Care Aware Topeka Office- 1100 SW Wanamaker Rd., # 201, Topeka	3	\$15
7/28/2018	Understanding the Influence of Temperament- Free to Literacy Connections participants.	Audrey Danielson	9:00 AM	Child Care Aware Topeka Office- 1100 SW Wanamaker Rd., # 201, Topeka	3	\$15

**Region
THREE**

Professional Development Opportunities

To Register Visit: <http://east.ks.childcareaware.org>

Date	Title	Trainer	Time	Location	Hrs	Cost
8/2/2018	Knock, Knock! Who's There? Developing Humor in Preschoolers- Free to Literacy Connections participants.	Michelle Gilbert	6:30 PM	Child Care Aware Topeka Office- 1100 SW Wanamaker Rd., # 201, Topeka	2	\$12
8/4/2018	Foundations of Quality Child Care, Part 1	Rebecca Quigley	8:00 AM	Child Care Aware Topeka Office- 1100 SW Wanamaker Rd., # 201, Topeka	6	*\$30
8/7/2018	Art Smart: Scribbles to Scissors	Talia Juiliano	6:30 PM	Brighter Beginnings 2- 621 W 14th St., Chanute	2	\$12
8/7/2018	Preschool Classroom Management Strategies- Free to Literacy Connections participants.	Michelle Gilbert	6:30 PM	Child Care Aware Topeka Office- 1100 SW Wanamaker Rd., # 201, Topeka	2	\$12
8/14/2018	Let's Play Dough!- Free to Literacy Connections participants.	Michelle Gilbert & Audrey Danielson	6:30 PM	Child Care Aware Topeka Office- 1100 SW Wanamaker Rd., # 201, Topeka	2	\$12
8/14/2018	Let's Play Dough!- Free to United Way of Douglas County programs.	Deb Danielson	6:30 PM	United Way of Douglas County Building- 2518 Ridge Court, Lawrence	2	\$12
8/15/2018	Sharks or Toddlers? Dealing with Biting- Free to Literacy Connections participants.	Rebecca Quigley	6:30 PM	Child Care Aware Topeka Office- 1100 SW Wanamaker Rd., # 201, Topeka	2	\$12
8/16/2018	Observing Children: Taking Useful and Objective Notes- Free to Literacy Connections participants.	Grace Cott	6:30 PM	Child Care Aware Topeka Office- 1100 SW Wanamaker Rd., # 201, Topeka	2	\$12
8/18/2018	Foundations of Quality Child Care, Part 2	Hope Williams	9:00 AM	Child Care Aware Topeka Office- 1100 SW Wanamaker Rd., # 201, Topeka	6	*\$30
8/21/2018	Infant Development- Free to Literacy Connections participants.	Hope Williams	6:30 PM	Child Care Aware Topeka Office- 1100 SW Wanamaker Rd., # 201, Topeka	2	\$12
8/23/2018	Literacy Through the Day: Print in the Environment- Free to Literacy Connections participants.	Michelle Gilbert	6:30 PM	Child Care Aware Topeka Office- 1100 SW Wanamaker Rd., # 201, Topeka	2	\$12
8/25/2018	Building Relationships with Young Children- Free to Literacy Connections participants.	Audrey Danielson	9:00 AM	Child Care Aware Topeka Office- 1100 SW Wanamaker Rd., # 201, Topeka	3	\$15
8/28/2018	Scaffolding Learning- Free to Literacy Connections participants.	Michelle Gilbert	6:30 PM	Child Care Aware Topeka Office- 1100 SW Wanamaker Rd., # 201, Topeka	2	\$12
9/1/2018	Technology and Young Children	Rebecca Quigley	10:30 AM	Seneca Library- 606 Main St., Seneca	2	\$12
9/5/2018	Fingerplay FUN-damentals- Free to Literacy Connections participants.	Michelle Gilbert	6:30 PM	Child Care Aware Topeka Office- 1100 SW Wanamaker Rd., # 201, Topeka	2	\$12
9/10/2018	Be a Transition Magician- Free to Literacy Connections participants.	Karen Rogenmoser	6:30 PM	Child Care Aware Topeka Office- 1100 SW Wanamaker Rd., # 201, Topeka	2	\$12
9/11/2018	Child-Centered Teaching and Learning- Free to Strengthening Families participants.	Jennifer Pishny	6:00 PM	Wamego Senior Center- 501 Ash St., Wamego	3	\$15
9/11/2018	The Anti-Bias Classroom: A Global Look- Free to Literacy Connections participants.	Hope Williams	6:30 PM	Child Care Aware Topeka Office- 1100 SW Wanamaker Rd., # 201, Topeka	2	\$12
9/12/2018	Literacy Through the Day: Writing Around the Room- Free to Literacy Connections participants.	Michelle Gilbert	6:30 PM	Child Care Aware Topeka Office- 1100 SW Wanamaker Rd., # 201, Topeka	2	\$12
9/17/2018	Positive Behavior Expectations- Free to Strengthening Families participants.	Talia Juiliano	6:30 PM	Lifetime Learning Center- 206 N Pine St., Pittsburg	3	\$15
9/18/2018	Understanding and Guiding Children's Behavior- Free to Literacy Connections participants.	Michelle Gilbert	6:30 PM	Child Care Aware Topeka Office- 1100 SW Wanamaker Rd., # 201, Topeka	2	\$12
9/25/2018	Important Social & Emotional Gifts to Share with Young Children- Free to Literacy Connections participants.	Grace Cott	6:30 PM	Child Care Aware Topeka Office- 1100 SW Wanamaker Rd., # 201, Topeka	2	\$12
9/27/2018	One, Two, Buckle My Shoe: Promoting Numeracy Skills in Preschoolers- Free to Literacy Connections participants.	Michelle Gilbert	6:30 PM	Child Care Aware Topeka Office- 1100 SW Wanamaker Rd., # 201, Topeka	2	\$12
9/29/2018	Positive Behavior Expectations- Free to Literacy Connections participants.	Karen Rogenmoser	9:00 AM	Child Care Aware Topeka Office- 1100 SW Wanamaker Rd., # 201, Topeka	3	\$15

*If participants register and pay for both Part 1 and Part 2 at the same time, the cost will be \$50.

Professional Development Event Registration

For class descriptions and to register online for a class held by Child Care Aware® of Eastern Kansas, visit the Professional Development Calendar in the "Child Care Provider" section of our website, <http://east.ks.childcareaware.org>. You can also call 785-357-5171 in Topeka or 877-678-2548 toll free to register by phone. A printable registration form and our professional development event policies can be found in the "Child Care Providers" section of our website, <http://east.ks.childcareaware.org>.

**Region
THREE**

REGIONAL NEWS



Join us for one of the area's biggest conferences for child care providers...the 2018 Capital City Learn & Share!

This year's conference will take place in Topeka on September 22, 2018! Participants will be rocking and rhyming with keynote speaker Dr. Dena Register. Dr. Register is an Associate Professor of Music Therapy and Director of the Music Therapy program at West Virginia University. She will help participants explore the connection between music and literacy, and why music is such a powerful teaching tool.

Date: Sat., Sept. 22, 2018
 Time: 9:00 a.m. - 3:15 p.m.
 Audience: All
 In-Service Hours: 5



Additional information can be found on the Child Care Aware® of Eastern Kansas website, <http://east.ks.childcareaware.org>.

Calling All Child Care Provider Networking Groups...

Are you part of a group of child care providers or directors that meets regularly within Region 3? Let us know the details of your gatherings for October, November and December, and we will be sure to spread the word. Email eryn@east.ks.childcareaware.org with your group's name, meeting dates, times and locations. Be sure to let us know the target audience for your group.





Lending Library Extended Hours
 Topeka Weekend Lending Library Hours
 (1100 SW Wanamaker Rd., #201, Topeka)
 Sat., July 7, 2018, 9:00 a.m. - 12:00 p.m.
 Sat., July 21, 2018, 9:00 a.m. - 12:00 p.m.
 Sat., Aug. 4, 2018, 9:00 a.m. - 12:00 p.m.
 Sat., Aug. 18, 2018, 9:00 a.m. - 12:00 p.m.
 Sat., Sept. 1, 2018, 9:00 a.m. - 12:00 p.m.
 Sat., Sept. 15, 2018, 9:00 a.m. - 12:00 p.m.

Lawrence Extended Lending Library Hours
 (2518 Ridge Ct. [Inside United Way Bldg.], Lawrence)
 Tue., July 10, 2018, 4:30 - 7:30 p.m.
 Tue., Aug. 14, 2018, 4:30 - 7:30 p.m.
 Tue., Sept. 11, 2018, 4:30 - 7:30 p.m.

First Aid & CPR Trainings
 Location: Topeka Child Care Aware® Office, 1100 SW Wanamaker Rd., #201
 Sat., July 14, 2018
 9:00 a.m. - 3:00 p.m.
 Sat., Sept. 15, 2018
 9:00 a.m. - 3:00 p.m.

Trainer: Lori Steelman
 Cost: \$50
 To register, please call 785-217-4513 or email lsheartsaver@gmail.com

REGIONAL STAFF DIRECTORY

- REVA WYWADIS, Executive Director
- BECKY MEYER, Accountant
- ERYN ALLEN, Marketing & Communications Coordinator
- DEBRA MCCLELLAND, Research & Data Specialist
- SARAI REYES, Administrative Assistant/Bilingual Resource Specialist
- LAURIE PIGG, Parent Resource Center Manager
- LORI BOOS & BILLIE SEGRIST, Resource Specialist
- STEPHANIE PRUE, Library Resource Specialist

- MARIE TREICHEL & RENEE WOHLETZ, Provider Services Managers
- GRACE COTT, AUDREY DANIELSON, DEB DANIELSON, MICHELLE GILBERT, TALIA JUILIANO, JENNIFER PISHNY, REBECCA QUIGLEY, KAREN ROGENMOSER & HOPE WILLIAMS, Early Care & Education Specialists
- JANE REDGER & NANCY ROHR, Successful Connections Family Resource Specialists
- MEGAN SMITH & DEBBIE THOMAS, Links to Quality Community Consultants

**Region
FOUR**

Professional Development Opportunities

To Register Call: 800-755-0838

Date	Title	Trainer	Location	Hours	Fee
7/28/2018	The Great Escape: Natural Play Environments	Heather Waterfield	Christots Montessori School- 21403 Midland Drive, Shawnee	2	\$15
7/19/2018	MVPA--Every Day!	Carol Ayres	Leavenworth Health Department- 500 Eisenhower Road, Leavenworth	2	0

Space is limited; registration is not complete until payment received. Call 913.342.1110 x 1912 to pay by phone or mail registration to:

The Family Conservancy
444 Minnesota Ave, Ste. 200
Kansas City, KS 66101

REGIONAL NEWS

Announcing Our Quality Improvement Project



Child Care Aware® Region Four is currently recruiting programs interested in receiving technical assistance and support through the Strengthening Families project.

Participants enrolled in Strengthening Families will receive the following support:

- Professional Development
- Grant/stipend for equipment and materials
- Consultations with the Infant/Toddler Specialist
- Networking opportunities

The Strengthening Families Project is open to family child care homes and child care centers in Atchison, Leavenworth, Johnson and Wyandotte counties.

If interested, please call: 800-755-0838 or 913-573-2273

Save the Date

The Family Conservancy's Early Childhood Fall Symposium: It Starts with You - Problem Solving Through Effective Response

October 6, 2018 at the KU Edwards Campus BEST Conference Center in Overland Park

Featured keynote will be Jill Molli, Conscious Discipline Master Instructor.

5.5 KS and MO approved clock hours available. Breakfast and lunch provided.

Brochures will be mailed in August

For more information, contact Heather Waterfield at 913-742-4126 or hwaterfield@tfckc.org or go to www.thefamilyconservancy.org.



**Region
FOUR**



Johnson County Community College Early Childhood Continuing Education Courses

- July 09 - Problems, Problems Everywhere: Bully Proofing Your EC Classroom
- Aug 23 and 30 (\$49) - Pediatric First Aid and CPR (6:30-9:30 pm)
- July 19 - Understanding Child Development in Infants and Toddlers
- July 26 - Inspiration for the Infant and Toddler Classrooms
- July 30 - Emotional Intelligence and Its Impact on Learning
- Aug 06 - Working Through the Maze of Behavior Management
- Sept 11 - Equipping Children for Success Series: The Brain and Behavior
- Sept 18 - Authentic Assessment: Watching and Recording

All courses are held from 6:30 pm - 8:30 pm.

JCCC Campus: Regnier Center Room 175

To register call: 913-469-2323 or register online at: www.jccc.edu. The cost is: \$19.



Community Disaster Resiliency Network

The Community Disaster Resiliency Network (CDRN), made possible by the Margaret A. Cargill Foundation, is a diverse group of community based organizations that meet quarterly with an emphasis on building relationships between community organizations that serve vulnerable populations to help them increase their organizational preparedness and help their consumers be better prepared and connected.

The Family Conservancy and the CDRN stakeholders are focused on building resiliency and preparedness for children through engagement of child care providers, organizations that serve the needs of children, emergency management, and families as a whole community effort. We are currently establishing a variety of efforts to assist individuals and organizations to meet the needs of children in disasters and developing a specific timeline to achieve the goal of having a regional bi-state (MO and KS) vision for disaster planning and preparedness for the specific needs of child in disasters. If you are interested in joining the CDRN, please plan to attend the follow meeting:

September 18, 2018 - 10:00 a.m. -11:30 a.m.
 Eitas, located at 8508 Hillcrest Road, Kansas City, Missouri 64138
 Contact: Sara Shirk, Emergency Services Planner II (816) 701-8384 or sshirk@marc.org

REGIONAL STAFF DIRECTORY

KATRINA MINTER, CCR&R Director
kminter@thefamilyconservancy.org

AMY COCHRAN, Early Childhood Wellness Specialist
acochran@thefamilyconservancy.org

STACY HAMILTON, Data Coordinator
shamilton@thefamilyconservancy.org

JENNA BODENSTEINER, Infant/Toddler Specialist, Strengthening Families Project
jbodensteiner@thefamilyconservancy.org

Check it out!

Check out these Courses available for ANY CHILD CARE PROVIDER!

ONLINE Training Opportunities



Start Date	Course Type	Title	Trainer	Time	Hrs	Cost
7/10/2018	Interactive Online	Healthy Environments: Disease Prevention and Control	Denise Singer	6:30 PM	2	\$15
7/11/2018-7/18/2018	Online	Let's Move!	Talia Juiliano & Marie Treichel	9:00 AM	3	\$20
7/16/2018	Interactive Online	Keeping Children Safe: Environment and Transportation Safety	Rachel Jury	6:30 PM	2	\$15
7/18/2018-7/25/2018	Online	Lesson Planning Made Easy	Grace Cott	9:00 AM	3	\$20
8/9/2018	Interactive Online	Emergency Preparedness for Child Care Providers	Sherron French	7:00 PM	2	\$15
8/15/2018-8/22/2018	Online	Building Your Business: Starting Strong With the Basics	Jennifer Pishny	9:00 AM	3	\$20
8/28/2018	Interactive Online	Medication Administration in Child Care	Denise Singer	6:30 PM	2	\$15
9/10/2018	Interactive Online	Keeping Children Safe: Environment and Transportation Safety		7:00 PM	2	\$15
9/12/2018-9/19/2018	Online	Beyond the Book Nook: Creating a Literacy Rich Environment- Free to Literacy Connections participants.	Grace Cott	9:00 AM	3	\$20



Region One

Our Online Interactive courses take place in real time, with instructors who facilitate class discussions and on-screen activities. Participants can choose from a wide variety of courses and work with Early Childhood Professionals from across Kansas in the Virtual Online Classroom!

Region Three

Child Care Aware® of Eastern Kansas' online courses are instructor-led, but allow for flexible schedules and participation within the course time frame. Discussion boards, videos, images, self-evaluation tools and action plans are utilized to help participants get the most out of their online learning experience. Classes typically run one week and offer 3 hours of in-service credit.

Region Four

Online courses through The Family Conservancy are designed to help early childhood professionals complete annual training requirements and acquire required training hours for those seeking a Child Development Associate (CDA) credential, CDA credential renewal or inservice training. Our courses provide a variety of engaging topics designed specifically for the early childhood professional. Courses are convenient and can be accessed from almost any computer with Internet access - no matter where you are. For more information, go to: www.thefamilyconservancy.org/services/early-educators/professional-development/elearning

Did you know?

Child Care Aware® of Kansas sends monthly email blasts!



Strong Families Make a Strong Kansas

Send an email to info@ks.childcareaware.org to get started!

You will receive up to two emails per month with great info for you and the families you serve.

For the latest regional news...don't forget to contact your local CCR&R for more information!





Idea Spot

Are you ready for summer fun? Check out our Pinterest @ccaofkansas for ideas on gardening, water play, and outdoor fun!

Kansas Association of
Child Care Resource and
Referral Agencies d/b/a



PO Box 2294, Salina, KS 67402

NON PROFIT ORG.
U.S. POSTAGE
PAID
SALINA, KS 67401
PERMIT NO. 122



To stay up-to-date on the latest happenings with Child Care Aware® of Kansas and the CCR&Rs, follow us on **FACEBOOK, TWITTER, PINTEREST** and our websites!

DO YOU HAVE CHILD CARE OPENINGS?

Update your information to get accurate referrals!

Name: _____
Address: _____
City: _____ Zip: _____ County: _____
License #: _____ Phone: _____
Email: _____

Type of Care:

Licensed FCC Group FCC Child Care Center Preschool

Do You Accept DCF?

Yes No

Give Referrals?

Yes No

DAYS OPEN: Mon Tue Wed Thu Fri Sat Sun

Time (Open): _____

Time (Close): _____

<u>Age</u>	<u>Capacity</u>	<u>Vacancies</u>	<u>Enrolled</u>
Under Age 1 (Infant)	_____	_____	_____
12 - 17 Months (Infant)	_____	_____	_____
18 - 23 Months (Toddler)	_____	_____	_____
Age 2 (Toddler)	_____	_____	_____
Age 3 (Preschool)	_____	_____	_____
Age 4 (Preschool)	_____	_____	_____
Age 5 (School Age)	_____	_____	_____
Age 6 & Over (School Age)	_____	_____	_____

Please complete and return this form to your local CCR&R!

CCR&R MAILING ADDRESSES!

1 Region ONE

1508 E. Iron Ave.
Salina, KS 67401

2 Region TWO

1002 S. Oliver St.
Wichita, KS 67218

3 Region THREE

1100 SW Wanamaker Rd, Suite 201
Topeka, KS 66604

4 Region FOUR

444 Minnesota Ave, Suite 200
Kansas City, KS 66101