



REGION ONE

Kansas' most trusted child care resource.

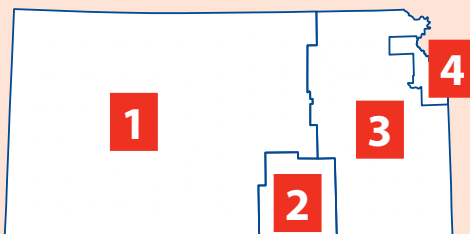
REGION ONE

Colby - 1255 S. Range, Colby
Community College Library
Garden City - 502 N. 7th St, Ste B2
Hays - 1010 Downing, Ste 60
Salina - 1508 E. Iron

Phone: Toll free 1-855-750-3343
Website: www.ks.childcareaware.org/one.html

Counties Served: Barber, Barton, Cheyenne, Clark, Clay, Cloud, Comanche, Decatur, Dickinson, Edwards, Ellis, Ellsworth, Finney, Ford, Gove, Graham, Grant, Gray, Greeley, Hamilton, Harper, Haskell, Hodgeman, Jewell, Kearny, Kingman, Kiowa, Lane, Lincoln, Logan, Marion, McPherson, Meade, Mitchell, Morton, Ness, Norton, Osborne, Ottawa, Pawnee, Phillips, Pratt, Rawlins, Reno, Republic, Rice, Rooks, Rush, Russell, Saline, Scott, Seward, Sheridan, Sherman, Smith, Stafford, Stanton, Stevens, Thomas, Trego, Wallace, Washington, Wichita

Child Care Aware® NEWS



Service Delivery Areas

Four Child Care Resource and Referral Agencies (CCR&Rs), located across Kansas, provide services to all 105 counties. Together, we offer many services for families, child care providers and community members.

Our referral center makes finding quality child care programs quick and easy for parents and families.

For child care providers and early learning staff, professional development opportunities and resources are available.

For local communities, supply and demand data paints the picture about child care.

These are just a few of our many services - for more details about all of the work we do, please contact your local CCR&R.

REGION ONE • Toll free 855-750-3343
Service Centers: Salina, Hays, Garden City, Colby

REGION TWO • Toll free 800-684-3962
Service Center: Wichita

REGION THREE • Toll free 877-678-2548
Service Centers: Topeka, Lawrence, Pittsburg

REGION FOUR • Toll free 800-755-0838
Service Center: Kansas City

Enter to Win!

Is your child care provider profile out of date? Call us today! Update your profile and/or your vacancies and your name will be entered to win a Walmart Gift Card! We will draw names every quarter. It's easy to win!

In order for your name to keep going out to parents looking for child care, your profile needs to be updated by September 30, 2014. When profiles are not updated every year, Child Care Aware® of Kansas cannot refer parents to your child care.

When you call in to update your provider profile, some of the information you will be updating for the Referral Center is: years of experience, hours of care, rates, age range of children in your care, your vacancies and what ages, the environment of the home or center, the philosophy used, if you take special needs, CPR and First Aid certified, and if you take DCF/SRS.

Call Megan at 1-855-750-3343, email megan@ks.childcareaware.org, or print off a blank profile on our website at www.ks.childcareaware.org/one.html and mail it in.

CALL OR EMAIL US TODAY!!



Staff Directory

TANYA KOEHN, Director
tanya@ks.childcareaware.org

JENNIFER HECKER
Community Engagement
tanya@ks.childcareaware.org

ALLISON MEYERHOFF
Infant/Toddler Specialist
allison@ks.childcareaware.org

KELLY CAIN-SWART
Infant/Toddler Specialist
kelly@ks.childcareaware.org

SHERRON FRENCH
Infant/Toddler Specialist
sherron@ks.childcareaware.org

DEBB HOMMAN
Infant/Toddler Specialist
debb@ks.childcareaware.org

RACHEL JURY
Infant/Toddler Specialist
rachel@ks.childcareaware.org

MICHELE BRUNGARDT
Infant/Toddler Specialist
michele@ks.childcareaware.org

BRETT SCHMIDT
Infant/Toddler Specialist
brett@ks.childcareaware.org

MEGAN STRICKLIN, Data Clerk
megan@ks.childcareaware.org

Meet Our Staff



Brett Schmidt is an Infant/Toddler Specialist in the Hays office. Brett has been involved in Early Childhood Education since 2006. He taught kindergarten for seven years and one year of first grade. He graduated from Marietta College with his B.A. in Early Childhood Education (birth-12) and recently completed his M.S. in Brain-Based Teaching and Learning from Nova Southeastern University. Brett is also a certified provider for Visual and Auditory therapies. He enjoys spending time with his wife and son, gardening, horse training, reading, and photography.

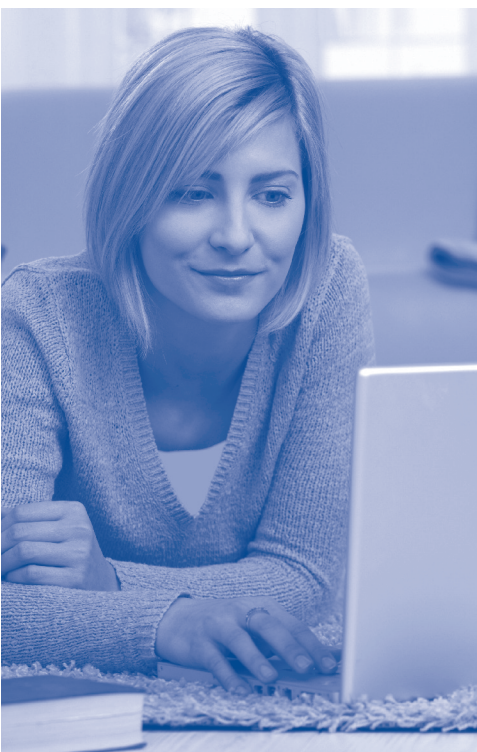
FIELD TRIPS THAT COME TO YOU!

AUGUST – Tricky Transition
SEPTEMBER/OCTOBER – Young Architects

YEAR ROUND FIELD TRIPS –
Teddy Bear Check-up and Icky Sticky Germs

CALL 1-855-750-3343 FOR MORE INFORMATION AND TO SCHEDULE YOURS TODAY!

What is the Child Care Aware Training Academy™?



The Child Care Aware Training Academy™ is an online, research-based professional development option designed for busy child care providers working in centers or from home. With over 200 courses available in a wide range of topics, these high-quality trainings can help you acquire training hours toward a Child Development Associate (CDA) Credential, a CDA Credential renewal or toward annual training requirements.

- **5-Hour Health & Safety Training:** Contains courses required by KDHE to meet Lexie's Law professional development for Child Abuse & Neglect with Head Trauma and Child Development.
- **40-Hour Child Care Essentials:** A Comprehensive Initial Training for Center-Based or Family Child Care Providers
- **8-Hour Child Abuse Training for Center Staff or Family Child Care Providers:** 4 hours in identifying and reporting child abuse and 4 hours preventing child abuse.
- **2-Hour Promoting Nutrition & Physical Activity in Child Care:** Two 60-minute online courses and resources designed to help you understand the causes of childhood obesity and how to most effectively address them in a child care setting through active play and nutritional meal planning.
- **120-Hour CDA Course:** Upon completion of this course you will be awarded 120 hours of in-service required to apply for a Child Development Associate (CDA) Credential in the infant/toddler, preschool center base setting or family child care setting.

Professional Development Opportunities

Date	Time	Location	Title	Trainer	Hours	Cost
7/1/14	6:30 PM	Great Bend-BCCC Rm T147	The Creative Curriculum® for Infants, Toddlers, and Twos: Exploring Sand and Water	Tanya Koehn	2	\$10
9/2/14	6:30 PM	Hays-1010 Downing Ave.	Building Positive Relationships <i>FREE to Quality Steps</i>	Brett Schmidt	2	\$10
9/4/14	7:00 PM	Dodge City Comm College Child Development Ctr 2501 N. 14th Street	The Creative Curriculum® for Infants, Toddlers, and Twos: Understanding that Each Child is Unique	Crissa Salmans	2	\$10
9/9/14	6:30 PM	Hays-1010 Downing Ave.	Enhancing Emotional Literacy <i>FREE to Quality Steps participants</i>	Brett Schmidt	2	\$10
9/13/14	9:30 AM	Clay Center-820 Spellman	I am Moving, I am Learning: Module 1 <i>FREE to Early Childhood Wellness participants</i>	Debb Homman	6	\$30
9/16/14	6:30 p.m.	Great Bend-BCCC-Rm T103	Introduction to Strengthening Families <i>FREE to Strengthening Families participants</i>	Sherron French	2	\$10
9/16/14	7:00 PM	Hays-1010 Downing Ave.	Responsive Environments and Routines <i>FREE to Quality Steps</i>	Brett Schmidt	2	\$10
9/16/14	6:30 PM	Medicine Lodge	Chicka Chicka Boom Boom: A-Z Around the Room	Kelly Cain-Swart	2	\$10
9/18/14	6:30 PM	Salina-1508 E Iron	Creative Curriculum® for Infants, Toddler, & Twos: Building Family Partnerships	Debb Homman	2	\$10
9/20/14	8:30 AM	Russell- 189 W Luray St. Russell County Health Dept.	PCAN: Building a Healthy Brain <i>FREE to Strengthening Families participants</i>	Rachel Jury	6	\$30
9/23/14	6:30 PM	Abilene-209 NW 4th (Jordan Room)	The Creative Curriculum® for Preschool: Dramatic Play	Debb Homman	2	\$10
9/23/14	6:30 PM	Salina-1508 E Iron	The Creative Curriculum® for Preschool: Toys and Games	Rachel Jury	3	\$15
9/23/14	7:00 PM	Colby - Colby CCC 1255 S. Range Rm 253	The Creative Curriculum® for Infants, Toddlers, and Twos: Exploring Sand and Water	Wanda Spresser	2	\$10
9/27/14	9:30 AM	Great Bend-BCCC Rm T147	Family to the Center of Our Focus <i>FREE to Strengthening Families participants</i>	Sherron French	2	\$10
9/27/14	12:30 PM	Great Bend-BCCC Rm T147	Practical Strategies to Build Resiliency in Children <i>FREE to Strengthening Families participants</i>	Sherron French	2	\$10
10/2/14	6:30 PM	Hutchinson Comm. College Parker Alumni Rm, Union 1300 N. Plum	Introduction to Strengthening Families <i>FREE to Strengthening Families participants</i>	Sherron French	2	\$10
10/6/14	8:30 AM	Salina-1508 E Iron	PCAN: Social-Emotional Development of Infants, Toddlers, and Their Families <i>FREE to Strengthening Families participants</i>	Rachel Jury	6	\$30
10/7/14	6:30 PM	Clifton- Faith United Church 200 West St	The Creative Curriculum® for Preschool: Sand and Water	Debb Homman	2	\$10

Professional Development Opportunities

Date	Time	Location	Title	Trainer	Hours	Cost
10/11/14	9:00 AM	Colby-Colby CCC 1255 S. Range Rm 253	Eco-Healthy Childcare <i>FREE to Early Childhood Wellness participants</i>	Brett Schmidt	6	\$30
10/11/14	8:30 AM	Russell-189 W Luray St. Russell County Health Dept.	PCAN: Building Collaborative Relationships with Families <i>FREE to Strengthening Families participants</i>	Rachel Jury	6	\$30
10/11/14	9:00 AM	Dodge City Comm College Child Development Ctr 2501 N. 14th Street	Building Social and Emotional Foundations <i>FREE to Quality Steps participants</i>	Kelly Cain-Swart	6	\$30
10/14/14	7:00 PM	TBA	Parent Engagement in Strengthening Families	Ruth Becker	2	\$10
10/21/14	6:30 PM	Pratt-St Paul Lutheran Church 118 S Thompson Street	Basic Child Development	Kelly Cain-Swart	2	\$10
10/21/14	7:00 PM	Beloit-1720 N Hersey Ave	Working with Temperaments	Debb Homman	2	\$10
10/23/14	6:30 PM	Great Bend-BCCC-Rm T103	Social Connections, Meeting Concrete Needs in Strengthening Families <i>FREE to Strengthening Families participants</i>	Sherron French	2	\$10
10/25/14	9:00 AM	Russell-189 W Luray St. Russell County Health Dept.	I am Moving, I am Learning: Module 1 <i>FREE to Early Childhood Wellness participants</i>	Debb Homman	6	\$30
10/25/14	8:00 AM	Salina-1508 E Iron	Safe Slumber: Creating a Safe Sleep Environment	Sherron French	2	\$10
10/25/14	10:15 AM	Salina-1508 E Iron	Child Abuse and Neglect with Abusive Head Trauma	Sherron French	2	\$10
10/25/14	1:30 PM	Salina-1508 E Iron	Basic Child Development	Sherron French	2	\$10
10/28/14	6:30 PM	Salina-1508 E Iron	"Sense"ational Environments for Infants and Toddlers	Sherron French	2	\$10

Class Descriptions

Building Positive Relationships

Participants will learn how to build relationships using the curriculum from the Center on the Social and Emotional Foundations for Early Learning (CSEFEL) for Infant/Toddler/Preschool.

The Creative Curriculum® for Infants, Toddlers, and Twos: Understanding that Each Child is Unique

Being aware of children's individual life's circumstances, temperaments, and language help you understand that events that may affect children's development and learning. All children need to feel included and successful. This session offers many strategies for support children.

Enhancing Emotional Literacy

Participants will learn how to enhance emotional literacy using the curriculum from the Center on the Social and Emotional Foundations for Early Learning (CSEFEL) for Infant/Toddler/Preschool.

I am Moving, I am Learning Module 1

Early Childhood programs play an important role in preventing childhood obesity, supporting motor development and promoting good nutrition. The "I am Moving, I am Learning" approach provides strategies to improve the quality of physical activity and nutrition choices for young children and their families.

Introduction to Strengthening Families

This course will provide an introduction to the Strengthening Families approach which centers on shifting the focus from risks and deficits to strengths and resiliency. The course will also provide an awareness of the Protective Factors framework and how it promotes optimal child development by utilizing strategies to build upon parent strengths.

Responsive Environments and Routines

Participants will learn how responsive environments and routines can be used to provide support for young children's appropriate behavior. This information will come from the Center on the Social and Emotional Foundations for Early Learning (CSEFEL) curriculum for Infant/Toddler/Preschool.

Chicka Chicka Boom Boom: A-Z Around the Room

Learn how to apply a cross-curricular approach using the book Chicka Chicka Boom Boom. Participants will come away with activities and ideas in the areas of early literacy, math, science, music & movement, and art. Strategies on how to apply the ideas and information presented in this session to other books will be discussed.

Class Descriptions

The Creative Curriculum® for Infants, Toddlers, and Twos: Building Family Partnerships

To serve children well, providers must develop partnerships with families. In a true partnership created to benefit the child, families and caregivers participate equally in the relationship and communicate regularly. By being familiar with the unique characteristics, strengths, and priorities of each family, providers can find ways to build the trust and respect that are necessary to this partnership.

PCAN: Building a Healthy Brain

The development of the brain begins at conception and continues across the life span. Child care professionals support and promote very young children's healthy brain development when they use relationships, respect, repetition, routines, and responsive interactions—the "5 R's." In this session, participants identify ways to purposefully use these five strategies in their work with very young children and their families.

The Creative Curriculum® for Preschool: Dramatic Play

Dramatic play is central to children's learning and development. In this training, participants will explore ways of creating a dramatic play area for children to learn and explore as they engage in dramatic play.

The Creative Curriculum® for Preschool: Toys and Games

When children explore, experiment, discover, and create with toys and games, their problem-solving skills and creativity are enhanced. In this event, participants will take a close look at toys and games and how they enhance every area of development in children. Participants will learn types of toys and games that are appropriate for preschoolers and ways to support learning.

Family to the Center of Our Focus

This course will provide an introduction to the Strengthening Families approach which centers on shifting the focus from risks and deficits to strengths and resiliency. This course also looks at the importance of family in the lives of children and how the two go hand-in-hand. Understanding the well being of a child is linked to the well-being of the family and one must also identify the vital role the environment plays in supporting all families

Practical Strategies to Build Resiliency in Children

This course will provide an introduction to the Strengthening Families approach which centers on shifting the focus from risks and deficits to strengths and resiliency. Social and Emotional Learning (SEL) is a critical component in building resiliency in children. SEL begins with looking at feelings and how they are important. Exploring the Happiness Equation, learning strategies to increase flexible thinking and understanding optimism and pessimism will assist with understanding and promoting SEL.

PCAN: Social-Emotional Development of Infants, Toddlers, and Their Families

Social-emotional development begins at birth and continues throughout life. The foundation for healthy social-emotional development laid in the first three years helps a child establish meaningful relationships with parents, caregivers, and peers and supports his or her learning, both in and outside of school. When children experience difficulty in acquiring social-emotional skills, they are at increased risk emotionally, developmentally, and academically.

The Creative Curriculum® for Preschool: Sand and Water

Sand and water play touches all domains of learning. Learn new strategies to support children's development and learning through a variety experiences in sand and water play.

Eco-Healthy Child Care

Research increasingly shows that the first years of a child's life are extremely important in shaping their future health and development. Child care providers can make small changes that make a big impact on the children in their care. Participants will learn about several types of chemicals and the health impact they can have on children. Participants will also learn how to reduce children's exposure to toxins and provide environmentally healthy, low-toxic toys, art supplies and child care settings.

PCAN: Building Collaborative Relationships with Families

Early childhood and child care professionals build partnerships with families as an important strategy to promote healthy child development. These partnerships can help prevent child abuse and neglect. Building effective relationships with families is the foundation for these partnerships. This unit supports relationship building with families by helping providers to define and practice active listening skills and to understand both the concept of the parallel process in relationships and the importance of reflection. It also aids participants in developing strategies for establishing effective relationships with families.

Building Social Emotional Foundations

Rock Solid Foundations is a blended curriculum of the Infant/Toddler/Preschool modules from the Center on the Social and Emotional Foundations for Early Learning (CSEFEL) curriculum; based upon the Pyramid Project model; and using the foundational framework and strategies from CSEFEL.

Basic Child Development

Upon completion of this professional development event participants will appreciate the principles and influences of child growth and development and recognize that child development is individual. This session addresses the four domains of child development and identifies benchmarks for each area of development for birth through six years of age.

Working with Temperaments

Just as children come in all shapes and sizes, so does their temperaments. With whom do you work best? What kinds of temperaments are there? All these questions and more will be answered in this session.

Social Connections, Meeting Concrete Needs in Strengthening Families

This course will provide an introduction to the Strengthening Families approach which centers on shifting the focus from risks and deficits to strengths and resiliency thereby building the Protective Factors. Social connections and support systems for families are very important in building the Protective Factors. One must first understand ways to help families establish social connections and access concrete support in times of need. Building an awareness on how social connections and concrete support promotes optimal child development and build family strengths.

Safe Slumber: Creating a Safe Sleep Environment

The Safe Slumber presentation defines Sudden Infant Death Syndrome (SIDS) and Sudden Unexpected Infant Death (SUID), identifies how to create a safe sleep environment, become familiar with SIDS/SUID and what steps educators, parents and child care providers can take to reduce SIDS and SUID. Participants will discuss definitions and statistics of SIDS/SUID and address bereavement issues related to infant mortality

Child Abuse and Neglect with Abusive Head Trauma

Become familiar with the different types of child abuse and neglect and what it means to be a mandated reporter. Participants will get tips on how to prevent child abuse and neglect including shaken baby syndrome.

"Sense"ational Infant and Toddler Environments

Infants and toddlers explore their environment using all of their senses. Participants will learn new and creative ways to engage infants and toddlers through creating environments and experiences that stimulate all senses.

Class Registration Form

To register for Child Care Aware® Region One trainings, mail this completed form and payment to:
Child Care Aware® Region One, 1508 E. Iron Avenue, Salina, KS 67401

Name: _____ Center/Business: _____
 Address: _____ Phone: _____
 Cell Phone: _____ Email: _____

Course Title	Date	Location	Cost

- Quality Steps Participant Early Childhood Wellness Participant
 Strengthening Families Participant Live in County with Waived Cost

Registration and payment must be received 5 business days prior to the event.

Peer Learning Community

September 8, 2014 6:30 – 8:00 PM Brett Schmidt Hays Office
The Lending Library and Resource Room will be open at 5:30 for anyone wishing to check out books, materials or use the laminator or die cut machine.

October 6, 2014 6:30 – 8:00 PM Brett Schmidt Hays Office
The Lending Library and Resource Room will be open at 5:30 for anyone wishing to check out books, materials or use the laminator or die cut machine.

September 16 , 2014 7:00 – 8:30 PM Rachel Jury Salina Office
The Lending Library and Resource Room will be open at 5:00 for anyone wishing to check out books, materials or use the laminator or die cut machine.

October 21, 2014 7:00 – 8:30 PM Rachel Jury Salina Office
The Lending Library and Resource Room will be open at 5:00 for anyone wishing to check out books, materials or use the laminator or die cut machine.

September 23, 2014 6:30 – 8:00 PM Sherron French Hutchinson Library
Build a group — come help plan and organize!

Child Care Providers – Please copy this page and share with your families!

FAMILY FOCUS

Fun Fall Family Activities Checklist



Go apple picking



Bake a pumpkin pie



Decorate your own pumpkin



Take a walk together

HAVE FUN OUTDOORS

- Go apple picking
- Get lost in a corn maze
- Play a game of two-hand touch football
- Go for a hike
- Go for a hayride
- Collect colorful fall leaves
- Plant bulbs in your garden for next spring
- Run a race
- Make a pinecone bird feeder
- Borrow a book from the library
- Jump in a pile of leaves
- Bake an apple or pumpkin pie
- Drink hot spiced cider
- Roast vegetables for a tasty side dish
- Eat a slice of warm pumpkin bread
- Make a big batch of chili

CELEBRATE THE HOLIDAYS

- Decorate your own pumpkin
- Make a Halloween costume
- Throw a Halloween party
- Host a potluck Thanksgiving dinner

TAKE A WALK TOGETHER

- Breathe in the cool, crisp air
- Listen to the sound of leaves crunching under your feet
- Watch geese flying south for the winter
- Collect pinecones and display them in a glass bowl
- Attend a fall festival

Adapted from: <http://www.realsimple.com/work-life/entertainment/fall-activities-0010000084199/>

Do you know somebody interested in becoming a child care provider?
Have them call their local Child Care Resource & Referral Agency at 1-855-750-3343 for more information!

IDEA SPOT

Child Care Aware® Region One now has a Professional Development Punch Card to use when you attend Professional Development Trainings.

Attend 5 trainings, get the 6th training **FREE!**

Receive your punch card at your next training!



LENDING LIBRARY HOURS

All libraries are open Monday - Friday from 8am - 5pm and by appointment.

ADDITIONAL HOURS:

COLBY - 1255 S. Range
Colby Community College Library
 ■ By appointment
 ■ One hour prior to trainings

HAYS - 1010 Downing, Ste. 60
 ■ 1st Saturday: 9am - 12pm
 ■ 3rd Tuesday: 5pm - 7pm
 ■ One hour prior to trainings

GARDEN CITY - 502 N. 7th, Ste. B2
 ■ By appointment
 ■ One hour prior to trainings

SALINA - 1508 E. Iron
 ■ 1st Saturday: 9am - 12pm
 ■ 3rd Tuesday: 5pm - 7pm
 ■ One hour prior to trainings

Call 1-855-750-3343 for more information or to make an appointment

Kansas Association of Child Care Resource and Referral Agencies d/b/a



PO Box 2294, Salina, KS 67401

NON PROFIT ORG.
U.S. POSTAGE
PAID
TOPEKA, KS
PERMIT NO. 9

DO YOU HAVE CHILD CARE OPENINGS?

Update your information to get accurate referrals!



Name: _____
 Address: _____
 City: _____ Zip: _____ County: _____
 License #: _____ Phone: _____
 Email: _____

Type of Care:

Licensed FCC Group FCC Child Care Center Preschool

Do You Accept DCF?

Yes No

Receive This Newsletter by Email?

Yes No

DAYS OPEN:

Mon Tue Wed Thu Fri Sat Sun
 Time (Open): _____
 Time (Close): _____

Age	Capacity	Vacancies	Enrolled
Under Age 1 (Infant)	_____	_____	_____
12 - 17 Months (Infant)	_____	_____	_____
18 - 23 Months (Toddler)	_____	_____	_____
Age 2 (Toddler)	_____	_____	_____
Age 3 (Preschool)	_____	_____	_____
Age 4 (Preschool)	_____	_____	_____
Age 5 (School Age)	_____	_____	_____
Age 6 & Over (School Age)	_____	_____	_____

Please complete and return this form to:

Child Care Aware® of Kansas, 1508 E. Iron Avenue, Salina, KS 67401

