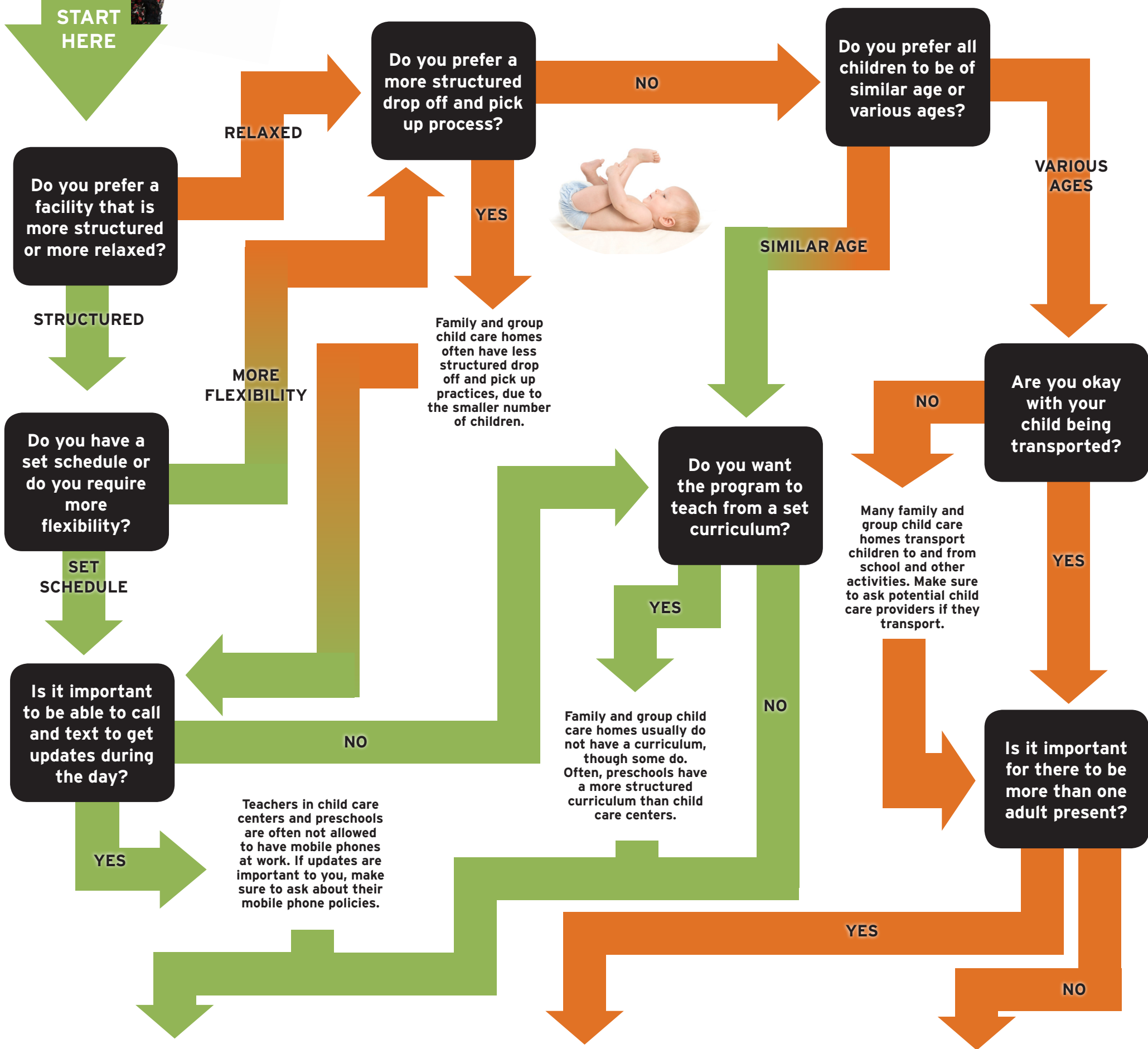


# What Type of Child Care is Right for Your Family?



## CHILD CARE CENTER

Based on your responses, you would most likely prefer a child care center setting for your child.

Most child care centers separate the children into classrooms by age group. Depending on the number of adults in each classroom, there can be as many as 32 children in a single classroom.

Child care centers typically have set hours of operation and are less flexible with scheduling. Drop off and pick up times are often more structured, due to the large number of children in the facility. It is not uncommon for parents to drop their children off with one teacher and pick them up from another.



## GROUP CHILD CARE HOME

Based on your responses, you would most likely prefer a group child care home setting for your child.

Most group child care homes have two adults who care for as many as twelve children at one time, depending on the ages of the children, which can vary from infant to school age.

It is less common for child care homes to transport, since there is more than one adult. These facilities are often less structured during drop off and pick up times, but allow for more flexibility in days and times care is available.



## FAMILY CHILD CARE HOME

Based on your responses, you would most likely prefer a family child care home setting for your child.

Most family child care homes have only one adult who cares for as many as ten children at one time, depending on the ages of the children, which can vary from infant to school age.

It is not uncommon for family child care homes to transport in order to drop off or pick up school age children. These facilities are often less structured during drop off and pick up times, but allow for more flexibility in days and times care is available.