


**REGION ONE • Toll free  
855-750-3343**

Service Centers: Salina, Hays,  
and Colby

**REGION TWO • Toll free  
800-684-3962**

Service Center: Wichita

**REGION THREE • Toll free  
877-678-2548**

Service Centers: Topeka,  
Lawrence, and Pittsburg

**REGION FOUR • Toll free  
800-755-0838**

Service Center: Kansas City

**FOR THE LATEST  
PROFESSIONAL  
DEVELOPMENT  
OPPORTUNITIES  
AROUND THE STATE...  
CHECK OUT THE  
ONLINE TRAINING  
CALENDAR—**

[www.ks.childcareaware.org](http://www.ks.childcareaware.org)

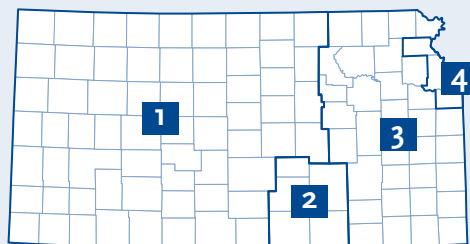
**Our Offices Will Be Closed  
Mon., Jan. 1, 2018 (Holiday)  
Mon., Jan. 15, 2018 (Holiday)**

**Child Care Aware® of Kansas**

Toll free 1-855-750-3343  
[www.ks.childcareaware.org](http://www.ks.childcareaware.org)

Follow us on FACEBOOK,  
TWITTER and PINTEREST!

# Child Care Aware® NEWS


**SERVICE DELIVERY AREAS**

Four Child Care Resource and Referral Agencies (CCR&Rs), located across Kansas, provide services to all 105 counties. Together, we offer many services for families, child care providers and community members.

Our resource center makes finding quality child care programs quick and easy for parents and families.

For child care providers and early learning staff, professional development opportunities and resources are available.

For local communities, supply and demand data paints the picture about child care.

These are just a few of our many services - for more details about all of the work we do, please contact your local CCR&R.

## Sesame Street in Communities A Great New Provider Resource

Early Childhood providers face many challenges in their daily work supporting children and families. Their care and support can make a huge difference in the life of a young child. Sesame Street in Communities has many resources to help young children overcome adversity and thrive. These resources cover the areas of health and wellness, social-emotional skills, school's readiness, and more. Sesame Street in Communities helps the Early Childhood provider connect with families through storybooks, videos, printable materials, articles, interactives, and workshops. The activities on the site are designed for children ages zero to six.

Go to [www.sesamestreetincommunities.org](http://www.sesamestreetincommunities.org) to log in for great resources.



## Save-the-Date

**Growing with Children 2018,**  
Central Community Church,  
Wichita, April 7, 2018

**CCPC of Kansas Inc  
Professional Development  
Event**  
Betting on the Future,  
Learning From the Past  
Ramada Inn 420 SE 6th,  
Topeka, April 20-21, 2018

**Week of the Young Child**  
April 16-20, 2018

# FAMILY FOCUS

## BE A VOICE FOR CHILDREN

Did you know there are more than 200,000 children under 4 years living in Kansas? Parents and families have a unique perspective into the needs of their children and the need for high quality childcare, but often don't know how to express those needs in a way that will affect public policy. The following tips can assist you in becoming a voice for children:

Post on your  
resource board  
or include in your  
newsletter for  
parents!

- **Get Informed-** Visit our Early Childhood Matters Pinterest board at [www.pinterest.com/ccaofkansas/early-childhood-matters/](http://www.pinterest.com/ccaofkansas/early-childhood-matters/) to find informational articles, data and reports.
- **Take Action-** Contact your local legislation to tell them what you think. Click here or visit <http://www.ks.childcareaware.org/advocacy/> for resources to get you started. Here you can get the basics, state legislators contact information, and suggestions and other resources to help you get your voice heard!
- **Stay Informed-** Follow Child Care Aware® of Kansas, Child Care Aware® of America, and Kansas Action for Children on Facebook and Twitter.

Source: [http://www.ks.childcareaware.org/wp-content/uploads/2017/08/KS\\_Facts.pdf](http://www.ks.childcareaware.org/wp-content/uploads/2017/08/KS_Facts.pdf) and [www.ks.childcareaware.org/advocacy/](http://www.ks.childcareaware.org/advocacy/)



***Do you know somebody interested in becoming a child care provider?***  
**Contact your local Child Care Resource & Referral Agency (CCR&R) for more information!**

**Region  
ONE**

# Professional Development Opportunities

To Register Call: 855-750-3343

Date	Title	Trainer	Time	Location	Hrs	Cost
1/4/2018	Schedules, Routines, and Transitions	Debb Homman	6:30 PM	Abilene Public Library- 209 NW. 4th Street Jordan Room, Abilene	2	\$15
1/6/2018	Pediatric First Aid & CPR	Denise Singer	8:00 AM	Colby Community College- 1255 S. Range, Library Basement Rm 253, Colby	4	\$50
1/9/2018	The Creative Curriculum for Preschool: Block Play	Denise Singer	6:00 PM	St. Catherine's Hospital- 401 East Spruce Street, Garden City	2	\$15
1/13/2018	The Creative Curriculum for Infants, Toddlers, and Twos: Exploring Sand and Water	Kelly Cain-Swart	9:00 AM	Pratt Regional Medical Center- 200 Commodore, Pratt	2	\$15
1/13/2018	Food, Fun, and Fitness-It's Berry, Berry Good	Kelly Cain-Swart	11:30 AM	Pratt Regional Medical Center- 200 Commodore, Pratt	2	\$15
1/13/2018	Basic Child Development Including Supervision of Children	Kelly Cain-Swart	1:30 PM	Pratt Regional Medical Center- 200 Commodore, Pratt	2	\$15
1/13/2018	Working with Temperaments	Debb Homman	9:00 AM	Minneapolis Public Library- 519 Delia Avenue, Minneapolis	2	\$15
1/18/2018	Learning Fun with The Napping House	Denise Singer	6:00 PM	Colby Community College- 1255 S. Range, Library Basement Rm 253, Colby	2	\$15
1/20/2018	Emergency Preparedness for Child Care Providers- \$7.50 for Ottawa, McPherson, and Saline County Providers.	Rachel Jury	8:00 AM	Child Care Aware Salina Office- 1508 E. Iron, Salina	2	\$15
1/20/2018	Healthy Environments: Disease Prevention and Control- \$7.50 for Ottawa, McPherson, and Saline County Providers.	Rachel Jury	10:15 AM	Child Care Aware Salina Office- 1508 E. Iron, Salina	2	\$15
1/20/2018	Medication Administration in Child Care- \$7.50 for Ottawa, McPherson, and Saline County Providers.	Rachel Jury	1:15 PM	Child Care Aware Salina Office- 1508 E. Iron, Salina	2	\$15
1/23/2018	Building Positive Relationships	Debb Homman	6:30 PM	Main Street Tabernacle- 1610 Main St., Belleville	2	\$15
1/30/2018	Scaffolding Learning	Sherron French	6:30 PM	Child Care Aware Salina Office- 1508 E. Iron, Salina	2	\$15
2/3/2018	Pediatric First Aid & CPR	Denise Singer	9:00 AM	St. Catherine's Hospital- 401 East Spruce Street, Garden City	4	\$50
2/3/2018	Embedded Learning	Sherron French	9:00 AM	Child Care Aware Hays Office- 1011B Centennial Blvd., Hays	2	\$15
2/3/2018	Using the Scientific Method for Meaningful Learning	Sherron French	1:00 PM	Child Care Aware Hays Office- 1011B Centennial Blvd., Hays	3	\$24
2/10/2018	Pediatric First Aid & CPR	Debb Homman	8:00 AM	Faith United Church Presbyterian- 200 West Street, Clifton	4	\$55
2/13/2018	Fostering Children's Thinking	Denise Singer	6:00 PM	Colby Community College- 1255 S. Range, Library Basement Rm 253, Colby	2	\$15
2/15/2018	Pediatric First Aid & CPR-\$30 for Ottawa, & McPherson County Providers.	Sherron French	6:00 PM	Child Care Aware Salina Office- 1508 E. Iron, Salina	4	\$60
2/27/2018	Let's Move, Learn, and Have Fun!	Sherron French	6:30 PM	Child Care Aware Salina Office- 1508 E. Iron, Salina	2	\$5
3/3/2018	Pediatric First Aid & CPR	Denise Singer	9:00 AM	Child Care Aware Hays Office- 1011B Centennial Blvd., Hays	4	\$50
3/6/2018	Active Play Area Design	Sherron French	6:30 PM	Child Care Aware Salina Office- 1508 E. Iron, Salina	2	\$15
3/10/2018	Enhancing Emotional Literacy	Kelly Cain-Swart	9:00 AM	Hutchinson Community College- 1300 N Plum, Hutchinson	2	\$15
3/10/2018	Working with Temperaments	Kelly Cain-Swart	11:30 AM	Hutchinson Community College- 1300 N Plum, Hutchinson	2	\$15



**Region  
ONE**

# Professional Development Opportunities

To Register Call: 855-750-3343

Date	Title	Trainor	Time	Location	Hrs	Cost
3/10/2018	Happy Meals: Safe Food Practices and Allergy Awareness	Kelly Cain-Swart	1:30 PM	Hutchinson Community College- 1300 N Plum, Hutchinson	2	\$15
3/10/2018	The Creative Curriculum for Preschool: Cooking	Rachel Jury	8:30 AM	Child Care Aware Hays Office- 1011B Centennial Blvd., Hays	3	\$24
3/10/2018	Medication Administration in Child Care	Rachel Jury	12:30 PM	Child Care Aware Hays Office- 1011B Centennial Blvd., Hays	2	\$15
3/12/2018	Schedules, Routines, and Transitions	Debb Homman	6:30 PM	Faith United Church Presbyterian- 200 West Street, Clifton	2	\$15
3/13/2018	Emergency Preparedness for Child Care Providers	Denise Singer	6:00 PM	St. Catherine's Hospital- 401 East Spruce Street, Garden City	2	\$0
3/13/2018	Pediatric First Aid & CPR	Sherron French	6:00 PM	Barton County Community College T-147- 245 Northeast 30 Rd., Great Bend	4	\$50
3/27/2018	Active Play Area Design	Debb Homman	6:30 PM	Minneapolis Public Library- 519 Delia Avenue, Minneapolis	2	\$15

## REGIONAL NEWS



### February is National Dental Health Month

Children can avoid cavities by using these simple steps:

- Brushing your teeth twice a day with fluoride toothpaste
- Flossing between your teeth
- Eating a healthy diet
- Limiting sugary beverages and snacks
- Going for regular visits with your dentist for oral prevention and treatment

**Call today to schedule your Totally Teeth visit with an Early Care and Education Specialist!**



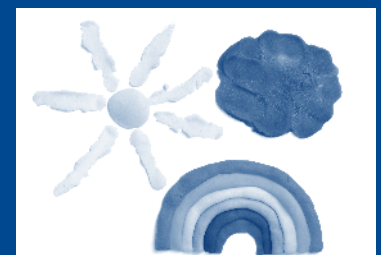
### Outdoor Play in the Winter

We all know how important it is for children to get out in the fresh air and run. However, when the weather turns chilly, young children become reluctant to go outside. As providers, there are concerns about cold and illnesses that run prevalent during the winter months. Playing outside in the winter months has its health risks if children are not properly dressed. Why should you put forth the effort to prepare children for outdoor play? Call us for an interactive play visit and find out today!

### A New Space

Our Hays Office is now located at 1011 B Centennial Blvd. Come check out the new provider work space and training room.

Office hours are by appointment. Please call 855-750-3343 to set up a time to explore.



### REGIONAL STAFF DIRECTORY

**KENDRA PRATT**  
*Regional Services Manager*

**SHERRON FRENCH**  
*Regional Services Coordinator*

**DEBB HOMMAN**  
*Early Care & Education Specialist*

**RACHEL JURY**  
*Early Care & Education Specialist*

**DENISE SINGER**  
*Early Care & Education Specialist*

**MEGAN BECKLEY**  
*Data Clerk*

**Region  
TWO**

# Professional Development Opportunities

Costs listed are for Child Start Members that have pre-registered; if not a Member, please call. 800-684-3962.

Date	Title	Trainer	Time	Location	Hrs	Cost
1/4/2018	Reality Bites: Biting at the Center	Tanya Bulluck	7:00 PM	Child Start- 1002 S. Oliver, Wichita	2	\$12
1/6/2018	Adult CPR/AED, Pediatric CPR and First Aid Call: 316-683-2645	Mike Ferguson	9:00 AM	Child Start- 1002 S. Oliver, Wichita	6	Call
1/8/2018	Signs & Symptoms of Childhood Illnesses	Mike Ferguson	7:00 PM	Child Start- 1002 S. Oliver, Wichita	1	\$6
1/9/2018	Child Abuse, Neglect, Reporting and Abusive Head Trauma	Mike Ferguson	7:00 PM	Child Start- 1002 S. Oliver, Wichita	2	\$12
1/11/2018	Happy Meals: Safe Food Practices and Allergy Awareness	Tanya Bulluck	7:00 PM	Child Start- 1002 S. Oliver, Wichita	2	\$12
1/13/2018	Basic Child Development Including Supervision of Children	Caroline Teter	9:00 AM	Child Start- 1002 S. Oliver, Wichita	2	\$12
1/13/2018	Safe Slumber: Creating a Safe Sleep Environment	Caroline Teter	11:30 AM	Child Start- 1002 S. Oliver, Wichita	2	\$12
1/13/2018	Child Abuse, Neglect, Reporting and Abusive Head Trauma	Caroline Teter	1:45 PM	Child Start- 1002 S. Oliver, Wichita	2	\$12
1/18/2018	Modifying Activities and Equipment	Caroline Teter	7:00 PM	Child Start- 1002 S. Oliver, Wichita	2	\$12
1/20/2018	Adult CPR/AED, Pediatric CPR and First Aid Call: 316-683-2645	Mike Ferguson	9:00 AM	Child Start- 1002 S. Oliver, Wichita	6	Call
1/25/2018	Emergency Preparedness for Child Care Providers	Caroline Teter	7:00 PM	Child Start- 1002 S. Oliver, Wichita	2	\$12
1/30/2018	Pediatric First Aid(No CPR) Call: 316-683-2645	Mike Ferguson	6:30 PM	Child Start- 1002 S. Oliver, Wichita	3	Call
2/3/2018	Adult CPR/AED, Pediatric CPR and First Aid Call: 316-683-2645	Mike Ferguson	9:00 AM	Child Start- 1002 S. Oliver, Wichita	6	Call
2/5/2018	Signs & Symptoms of Childhood Illnesses	Mike Ferguson	7:00 PM	Child Start- 1002 S. Oliver, Wichita	1	\$6
2/6/2018	Child Abuse, Neglect, Reporting and Abusive Head Trauma	Mike Ferguson	7:00 PM	Child Start- 1002 S. Oliver, Wichita	2	\$12
2/10/2018	Conversations with Young Children	Caroline Teter	9:00 AM	Child Start- 1002 S. Oliver, Wichita	3	\$18
2/15/2018	Medication Administration in Child Care	Caroline Teter	7:00 PM	Child Start- 1002 S. Oliver, Wichita	2	\$12
2/17/2018	Adult CPR/AED, Pediatric CPR and First Aid Call: 316-683-2645	Mike Ferguson	9:00 AM	Child Start- 1002 S. Oliver, Wichita	6	Call
2/17/2018	Basic Child Development Including Supervision of Children	Tanya Bulluck	9:00 AM	Child Start- 1002 S. Oliver, Wichita	2	\$12
2/17/2018	Safe Slumber: Creating a Safe Sleep Environment	Tanya Bulluck	11:30 AM	Child Start- 1002 S. Oliver, Wichita	2	\$12
2/17/2018	Child Abuse, Neglect, Reporting and Abusive Head Trauma	Tanya Bulluck	1:45 PM	Child Start- 1002 S. Oliver, Wichita	2	\$12
2/22/2018	Hard Joys: Managing Behavior with a Creative Mind and a Playful Spirit	Tanya Bulluck	7:00 PM	Child Start- 1002 S. Oliver, Wichita	2	\$12
2/27/2018	Keeping Children Safe: Environment and Transportation Safety	Tanya Bulluck	7:00 PM	Child Start- 1002 S. Oliver, Wichita	2	\$12
2/27/2018	Adult, Child and Infant CPR/AED/Choking (No First Aid) Call: 316-683-2645	Mike Ferguson	6:30 PM	Child Start- 1002 S. Oliver, Wichita	3	Call
3/3/2018	Adult CPR/AED, Pediatric CPR and First Aid Call: 316-683-2645	Mike Ferguson	9:00 AM	Child Start- 1002 S. Oliver, Wichita	6	Call
3/3/2018	Basic Child Development Including Supervision of Children	Caroline Teter	9:00 AM	Child Start- 1002 S. Oliver, Wichita	2	\$12
3/3/2018	Safe Slumber: Creating a Safe Sleep Environment	Caroline Teter	11:30 AM	Child Start- 1002 S. Oliver, Wichita	2	\$12
3/3/2018	Child Abuse, Neglect, Reporting and Abusive Head Trauma	Caroline Teter	1:45 PM	Child Start- 1002 S. Oliver, Wichita	2	\$12
3/5/2018	Signs & Symptoms of Childhood Illnesses	Mike Ferguson	7:00 PM	Child Start- 1002 S. Oliver, Wichita	1	\$6
3/6/2018	Child Abuse, Neglect, Reporting and Abusive Head Trauma	Mike Ferguson	7:00 PM	Child Start- 1002 S. Oliver, Wichita	2	\$12
3/15/2018	Happy Meals: Safe Food Practices and Allergy Awareness	Tanya Bulluck	7:00 PM	Child Start- 1002 S. Oliver, Wichita	2	\$12
3/17/2018	Adult CPR/AED, Pediatric CPR and First Aid Call: 316-683-2645	Mike Ferguson	9:00 AM	Child Start- 1002 S. Oliver, Wichita	6	Call
3/20/2018	Emergency Preparedness for Child Care Providers	Caroline Teter	7:00 PM	Child Start- 1002 S. Oliver, Wichita	2	\$12
3/22/2018	Braking Our Impulses: Shifting Gears to Positive Discipline	Tanya Bulluck	7:00 PM	Child Start- 1002 S. Oliver, Wichita	2	\$12
3/27/2018	Pediatric First Aid(No CPR) Call: 316-683-2645	Mike Ferguson	6:30 PM	Child Start- 1002 S. Oliver, Wichita	3	Call
3/31/2018	Adult CPR/AED, Pediatric CPR and First Aid Call: 316-683-2645	Mike Ferguson	9:00 AM	Child Start- 1002 S. Oliver, Wichita	6	Call

**Purchase a 2018 Professional Development Membership!** Members save 40% on most trainings in Butler, Cowley, Harvey, Sedgwick and Sumner counties! Additionally, members save on CPR courses through LifeSaver Learning, can schedule private trainings to be held at your child care center, receive free presentation events called Journey on the Go, access the Resource Library and much more! Visit [www.childstart.org](http://www.childstart.org) for more information!



**Please Note!**  
To register for trainings or to see non-member pricing, visit our website at [www.childstart.org](http://www.childstart.org) or call us at 800-684-3962.

**Region  
TWO**

**REGIONAL NEWS**



**Save the Date!**  
**Growing With Children 2018**  
 Saturday, April 7th  
 Central Community Church  
 Wichita, KS  
 6 Hours of In-service, dozens of session  
 choices, lunch and vendors!  
 Visit [www.gwc2018.eventbrite.com](http://www.gwc2018.eventbrite.com) for  
 more information and to register!



**Save Money by Registering in Advance!**  
 Beginning January 1, register and pay  
 before the class and save \$3.00 at the  
 door. You can pay over the phone or online.  
 Same-day walk-in attendees (without a paid  
 reservation) will be charged the \$3.00 as  
 part of their registration fee.

**REGIONAL STAFF DIRECTORY**

CHERYL FIRSCHING - Program Director  
[cfirsching@childstart.org](mailto:cfirsching@childstart.org)

MARILEE HANEY - Program Assistant Director  
[mhaney@childstart.org](mailto:mhaney@childstart.org)

TANYA BULLUCK - Special Projects  
 Coordinator [tbulluck@childstart.org](mailto:tbulluck@childstart.org)

CAROLINE TETER - Early Childhood Specialist  
[cteter@childstart.org](mailto:cteter@childstart.org)

CANDACE MALONE - Data Specialist  
[cmalone@childstart.org](mailto:cmalone@childstart.org)

INFORMATION FROM CHILD CARE AWARE® OF KANSAS - REGION THREE

**Region  
THREE**

**Professional Development Opportunities**

To Register Visit: <http://east.ks.childcareaware.org>

Date	Title	Trainer	Time	Location	Hrs	Cost
1/4/2018	Scaffolding Learning- Free to Literacy Connections participants.	Michelle Gilbert	6:30 PM	Child Care Aware Lawrence Office- 2518 Ridge Court, Lawrence	2	\$12
1/9/2018	Building Character in Young Children- Free to Literacy Connections participants.	Michelle Gilbert	6:30 PM	Child Care Aware Topeka Office- 1100 SW Wanamaker Rd # 201, Topeka	2	\$12
1/10/2018	Prevention and Control of Infectious Diseases and Childhood Illnesses	Rebecca Quigley	6:30 PM	Child Care Aware Topeka Office- 1100 SW Wanamaker Rd # 201, Topeka	2	\$12
1/11/2018	Foundations of Basic Child Development	Grace Cott	6:30 PM	Child Care Aware Topeka Office- 1100 SW Wanamaker Rd # 201, Topeka	2	\$12
1/16/2018	The ABC's of a Healthy Me!	Talia Juiliano	6:30 PM	Lifetime Learning Center- 206 N Pine St., Pittsburg	6	\$5
1/16/2018	Quack Attack! Learning with Rubber Ducks- Free to Literacy Connections participants.	Michelle Gilbert	6:30 PM	Child Care Aware Topeka Office- 1100 SW Wanamaker Rd # 201, Topeka	2	\$12
1/18/2018	Child Abuse and Neglect	Hope Williams	6:30 PM	Child Care Aware Topeka Office- 1100 SW Wanamaker Rd # 201, Topeka	2	\$12
1/22/2018	Child Care Recordkeeping & Taxes	Reva Wywadis	6:30 PM	Child Care Aware Topeka Office- 1100 SW Wanamaker Rd # 201, Topeka	3	\$5
1/23/2018	Movin' and Groovin' throughout the Day	Nancy Rohr	6:30 PM	Child Care Aware Topeka Office- 1100 SW Wanamaker Rd # 201, Topeka	2	\$12
1/24/2018	Uh Oh! Gotta Go! Toilet Learning Tips	Rebecca Quigley	6:30 PM	Child Care Aware Topeka Office- 1100 SW Wanamaker Rd # 201, Topeka	2	\$12
1/25/2018	Seeds of Early Literacy: Language & Vocabulary- Free to Literacy Connections participants.	Michelle Gilbert	6:30 PM	Child Care Aware Topeka Office- 1100 SW Wanamaker Rd # 201, Topeka	2	\$12
1/27/2018	Building Relationships with Young Children- Free to Literacy Connections participants.	Audrey Danielson	9:00 AM	Child Care Aware Topeka Office- 1100 SW Wanamaker Rd # 201, Topeka	3	\$15
1/27/2018	Problem Solving in the Moment- Free to Strengthening Families participants and programs enrolled in the United Way of Douglas County Education Goal program.	Marie Treichel	9:00 AM	Child Care Aware Lawrence Office- 2518 Ridge Court, Lawrence	3	\$15
1/30/2018	Make Some Noise: Finding Your Voice for Advocacy	Reva Wywadis	6:30 PM	Child Care Aware Topeka Office- 1100 SW Wanamaker Rd # 201, Topeka	2	\$12



**Region  
THREE**

# Professional Development Opportunities

To Register Visit: <http://east.ks.childcareaware.org>

Date	Title	Trainer	Time	Location	Hrs	Cost
2/1/2018	Seeds of Early Literacy: Phonological Awareness- Free to Literacy Connections participants.	Michelle Gilbert	6:30 PM	Child Care Aware Topeka Office- 1100 SW Wanamaker Rd # 201, Topeka	2	\$12
2/3/2018	Safe Slumber: Creating a Safe Sleep Environment	Nancy Rohr	8:00 AM	Child Care Aware Topeka Office- 1100 SW Wanamaker Rd # 201, Topeka	2	\$12
2/3/2018	Child Abuse and Neglect	Rebecca Quigley	10:30 AM	Child Care Aware Topeka Office- 1100 SW Wanamaker Rd # 201, Topeka	2	\$12
2/3/2018	Foundations of Basic Child Development	Grace Cott	1:15 PM	Child Care Aware Topeka Office- 1100 SW Wanamaker Rd # 201, Topeka	2	\$12
2/6/2018	Brain Basics- Free to Literacy Connections participants.	Hope Williams	6:30 PM	Child Care Aware Topeka Office- 1100 SW Wanamaker Rd # 201, Topeka	2	\$12
2/7/2018	Medication Administration in Child Care	Audrey Danielson	6:30 PM	Child Care Aware Topeka Office- 1100 SW Wanamaker Rd # 201, Topeka	2	\$12
2/7/2018	Technology and Young Children	Rebecca Quigley	6:30 PM	Highland Community College- 430 Arizona Ave, Holton	2	\$12
2/8/2018	Director's Toolbox: Coaching Staff on Powerful Interactions- Free to directors of child care programs participating in the Literacy Connections program.	Michelle Gilbert	1:00 PM	Child Care Aware Topeka Office- 1100 SW Wanamaker Rd # 201, Topeka	3	\$15
2/12/2018	Marketing Your Child Care Business	Reva Wywadis	6:30 PM	Child Care Aware Topeka Office- 1100 SW Wanamaker Rd # 201, Topeka	3	\$5
2/15/2018	Developing Powerful Interactions with Young Children- Free to Literacy Connections participants.	Michelle Gilbert	6:30 PM	Child Care Aware Topeka Office- 1100 SW Wanamaker Rd # 201, Topeka	2	\$12
2/19/2018	Fingerplay FUN-damentals- Free to Literacy Connections participants.	Michelle Gilbert	6:30 PM	Child Care Aware Topeka Office- 1100 SW Wanamaker Rd # 201, Topeka	2	\$12
2/20/2018	Happy Meals: Safe Food Practices and Allergy Awareness	Rebecca Quigley	6:30 PM	Child Care Aware Topeka Office- 1100 SW Wanamaker Rd # 201, Topeka	2	\$12
2/21/2018	Signing with Babies and Toddlers	Grace Cott	6:30 PM	2632 W Hwy 50 Emporia KS 66801	2	\$12
2/24/2018	Conversations with Young Children- Free to Literacy Connections participants.	Audrey Danielson	9:00 AM	Child Care Aware Topeka Office- 1100 SW Wanamaker Rd # 201, Topeka	3	\$15
2/26/2018	Keeping Children Safe: Environment and Transportation Safety	Nancy Rohr	6:30 PM	Child Care Aware Topeka Office- 1100 SW Wanamaker Rd # 201, Topeka	2	\$12
3/1/2018	The Role of Staff in an Effective Classroom- Free to Literacy Connections participants.	Michelle Gilbert	6:30 PM	Child Care Aware Topeka Office- 1100 SW Wanamaker Rd # 201, Topeka	2	\$12
3/3/2018	Using Homemade Books as Teaching Tools	Rebecca Quigley	10:30 AM	Seneca Library- 606 Main St., Seneca	2	\$12
3/6/2018	Signing with Babies and Toddlers- Free to Literacy Connections participants.	Nancy Rohr	6:30 PM	Child Care Aware Topeka Office- 1100 SW Wanamaker Rd # 201, Topeka	2	\$12
3/7/2018	Foundations of Basic Child Development	Grace Cott	6:30 PM	Child Care Aware Topeka Office- 1100 SW Wanamaker Rd # 201, Topeka	2	\$12
3/8/2018	Alphabet Soup- Free to Literacy Connections participants.	Michelle Gilbert	6:30 PM	Child Care Aware Topeka Office- 1100 SW Wanamaker Rd # 201, Topeka	2	\$12
3/12/2018	Insurance & Risk Management in Child Care	Reva Wywadis	6:30 PM	Child Care Aware Topeka Office- 1100 SW Wanamaker Rd # 201, Topeka	3	\$5
3/13/2018	Emergency Preparedness for Child Care Providers	Talia Juiliano	6:30 PM	Memorial Building- 101 S Lincoln St., Chanute	2	\$0
3/14/2018	Prevention and Control of Infectious Diseases and Childhood Illnesses	Rebecca Quigley	6:30 PM	Child Care Aware Topeka Office- 1100 SW Wanamaker Rd # 201, Topeka	2	\$12
3/15/2018	Look at it this Way! Multiple-Perspective Taking with Young Children- Free to Literacy Connections participants.	Michelle Gilbert	6:30 PM	Child Care Aware Topeka Office- 1100 SW Wanamaker Rd # 201, Topeka	2	\$12
3/19/2018	Positive Intent in the Work Place	Michelle Gilbert	6:30 PM	Child Care Aware Topeka Office- 1100 SW Wanamaker Rd # 201, Topeka	2	\$12
3/24/2018	Child-Centered Teaching and Learning- Free to Literacy Connections participants.	Hope Williams	9:00 AM	Child Care Aware Topeka Office- 1100 SW Wanamaker Rd # 201, Topeka	3	\$15

**Region  
THREE**

# Professional Development Opportunities

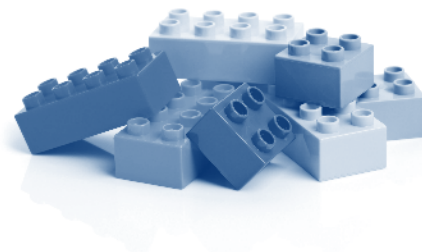
To Register Visit: <http://east.ks.childcareaware.org>

Date	Title	Trainer	Time	Location	Hrs	Cost
3/26/2018	Fine Motor Fun to Start Preschoolers Out "Write"- Free to Literacy Connections participants.	Michelle Gilbert	6:30 PM	Child Care Aware Topeka Office- 1100 SW Wanamaker Rd # 201, Topeka	2	\$12
3/27/2018	Using Homemade Books as Teaching Tools- Free to Literacy Connections participants.	Nancy Rohr	6:30 PM	Child Care Aware Topeka Office- 1100 SW Wanamaker Rd # 201, Topeka	2	\$12
3/28/2018	Books and Cooks: Exploring Early Literacy and Cooking Experiences with Preschoolers- Free to Literacy Connections participants.	Grace Cott	6:30 PM	Child Care Aware Topeka Office- 1100 SW Wanamaker Rd # 201, Topeka	2	\$12
3/31/2018	Strategies and Techniques for Expanding Language Free to Literacy Connections participants.	Audrey Danielson	9:00 AM	Child Care Aware Topeka Office- 1100 SW Wanamaker Rd # 201, Topeka	3	\$15
3/31/2018	Using Homemade Books as Teaching Tools	Nancy Rohr	10:00 AM	Dorothy Bramlage Public Library- 230 W 7th St Junction City KS 66441	2	\$12

## PROFESSIONAL DEVELOPMENT EVENT REGISTRATION

For class descriptions and to register online for a class held by Child Care Aware® of Eastern Kansas, visit the Professional Development Calendar in the "Child Care Provider" section of our website, <http://east.ks.childcareaware.org>. You can also call 785-357-5171 in Topeka or 877-678-2548 toll free, to register by phone.

A printable registration form and professional development event policies can be found at <http://east.ks.childcareaware.org/pages/trainingregistrationform.html>



## REGIONAL NEWS



### New Grant Allows For Reduced Cost Business Classes

Thanks to funding provided by the Topeka Credit Union Foundation (TCUF), a series for business classes will be offered in Topeka at a reduced cost. The TCUF grant will support many area early childhood programs as they strengthen their business practices, and we are grateful for this corporate partnership!



### Did You Know?

Child Care Aware® of Eastern Kansas' online courses are instructor-led, but allow for flexible schedules and participation within the course time frame. Discussion boards, videos, images, self-evaluation tools and action plans are utilized to help participants get the most out of their online learning experience. Classes typically run one week and offer 3 hours of inservice credit. See our online offerings on page 11.

### First Aid & CPR Trainings

Location: Topeka Child Care Aware® Office  
1100 SW Wanamaker Rd., #201

Sat., Jan. 6, 2018, 9:00 a.m. - 3:00 p.m.  
Sat., Jan. 20, 2018, 9:00 a.m. - 3:00 p.m.  
Sat., Feb. 10, 2018, 9:00 a.m. - 3:00 p.m.  
Sat., Mar. 3, 2018, 9:00 a.m. - 3:00 p.m.  
Sat., Mar. 17, 2018, 9:00 a.m. - 3:00 p.m.

Trainer: Lori Steelman Cost: \$50

To register, please call 785-217-4513 or email [lshartsaver@gmail.com](mailto:lshartsaver@gmail.com)





**Region  
THREE**



**Topeka's Weekend Lending Library Hours**  
(1100 SW Wanamaker Rd., #201, Topeka)

Sat., Jan. 6, 2018, 9:00 a.m. - 12:00 p.m.  
Sat., Jan. 20, 2018, 9:00 a.m. - 12:00 p.m.  
Sat., Feb. 3, 2018, 9:00 a.m. - 12:00 p.m.  
Sat., Feb. 17, 2018, 9:00 a.m. - 12:00 p.m.  
Sat., Mar. 3, 2018, 9:00 a.m. - 12:00 p.m.  
Sat., Mar. 17, 2018, 9:00 a.m. - 12:00 p.m.

**Lawrence's Extended Lending Library Hours**  
2518 Ridge Ct. (Inside United Way Bldg.)

Tue., Jan. 9, 2018, 4:30 - 7:30 p.m.  
Tue., Feb. 13, 2018, 4:30 - 7:30 p.m.  
Tue., Mar. 13, 2018, 4:30 - 7:30 p.m.

**REGIONAL STAFF DIRECTORY**

REVA WYWADIS, Executive Director

BECKY MEYER, Accountant

ERYN ALLEN, Marketing & Communications Coordinator

DEBRA MCCLELLAND, Research & Data Specialist

MAUREEN SMITH, Office Assistant

LAURIE PIGG, Parent Resource Center Manager

LORI BOOS & BILLIE SEGRIST, Resource Specialists

MARIE TREICHEL & RENEE WOHLTZ, Provider Services Managers

GRACE COTT, AUDREY DANIELSON, DEB DANIELSON, MICHELLE GILBERT, TALIA JUILIANO, REBECCA QUIGLEY & HOPE WILLIAMS, Early Care & Education Specialists

NANCY ROHR, Inclusion & Transition Specialist

STEPHANIE PRUE, Library Resource Specialist

INFORMATION FROM CHILD CARE AWARE® OF KANSAS - REGION FOUR

**Region  
FOUR**

**Professional Development Opportunities**

To Register Call: 800-755-0838

Date	Title	Trainer	Time	Location	Hrs	Cost
1/20/2018	Importance of Parenting and Child Development in Strengthening Families	Jenna Bodensteiner	9:30 AM	Antioch Library- 8700 Shawnee Mission Pkwy, Merriam	2	\$10
1/20/2018	Parent Engagement in Strengthening Families	Jenna Bodensteiner	12:00 PM	Antioch Library- 8700 Shawnee Mission Pkwy, Merriam	2	\$10
1/27/2018	The Great Escape: Natural Play Environments	Heather Waterfield	9:30 AM	Christots Montessori School- 21403 Midland Drive, Shawnee	2	\$0
2/24/2018	American Heart Association: Heartsaver First Aid/ CPR/AED Infant, Child and Adult	Heather Waterfield	9:00 AM	Child Care Aware of Kansas City Office 444 Minnesota Avenue, Kansas City	5	*\$65
2/24/2018	Schedules, Routines, and Transitions	Jenna Bodensteiner	9:30 AM	Blue Valley Library- 9000 West 151st Street, Overland Park	2	\$10
2/24/2018	Designing the Environment: Materials to Support Learning	Jenna Bodensteiner	12:00 PM	Blue Valley Library- 9000 West 151st Street, Overland Park	2	\$10
3/10/2018	Nutrition Education in Early Care and Education Settings- Space is limited; must pre-register.	Rhonda Erpelding	9:30 AM	Child Care Aware of Kansas City Office 444 Minnesota Avenue, Kansas City	2	\$0
3/10/2018	Go Baby Go - Infants on the Move- Space is limited; must pre-register.	Carol Ayres	9:30 AM	Child Care Aware of Kansas City Office 444 Minnesota Avenue, Kansas City	2	\$0

\* To register, call Leanne Hilligas at 913-742-4113 or email [lhilligas@tfckc.org](mailto:lhilligas@tfckc.org)

Registration is not complete until payment has been received. Call 800-755-0838 x 1912 to pay by credit card over the phone or mail payment to:

The Family Conservancy  
attn: Stacy Hamilton  
444 Minnesota Ave, Ste 200  
Kansas City, KS 66101



**Region**

**FOUR**

**REGIONAL NEWS**

**Johnson County Community College Early Childhood Continuing Education Courses**

1/30/17	Equipping Children for Success Series: Rituals, Routines and Praise
2/6/17	Please Talk with Me - Bridges for Communicating with Infants and Toddlers
2/15/17	STEAM Series: Engineering in the Early Childhood Classroom
2/27/17	Equipping Children for Success Series: Setting Limits and Responding to Misbehavior
3/22/17	STEAM Series: Integrating Arts Into the Early Childhood Classroom
3/27/17	Teacher's Guide to Managing Challenging People and Situations
4/2/17	Imaging What's Great for Kids: Parents and Teachers Working Together to Promote School Readiness
4/12/17	STEAM Series: Integrating Math Into the Early Childhood Classroom
4/18/17 and 4/25/17	Pediatric First Aid and CPR (6:30-9:30 pm)

All courses are held from 6:30 pm – 8:30 pm.  
JCCC Campus: Regnier Center Room 175.  
To register call: 913-469-2323 or register online at: [www.jccc.edu](http://www.jccc.edu). The cost is: \$19.

**KCPT-sponsored Training for Missouri and Kansas Programs**

**Small Parts Create Big Imaginations**

Thursday, January 11, 2018

6:30 PM - 9:00 PM

Location: KCPT

125 E 31st Street

Kansas City, MO 64108

Cost: Free

To register, contact Gary Brock at KCPT at 816-398-4321 or go to:  
[https://events.kcpt.org/event/early-childhood-workshop-small-parts-create-big-imaginations/?instance\\_id=2282](https://events.kcpt.org/event/early-childhood-workshop-small-parts-create-big-imaginations/?instance_id=2282)

**US Toy and The Family Conservancy Are Putting Fun Back in Teaching**

The Family Conservancy is partnering with US Toy to offer professional development opportunities for early childhood programs. The cost is \$10 per session.

**Advocating for Play: A Director's Responsibility**

For Directors

Saturday, February 24th 10am - 12pm

**The Great Escape: Natural Play**

Environments

For teachers and Family Child Care

providers

Saturday, April 28th 10am - 12pm

All sessions will be held at the US Toy

Store.

2008 W 103rd Terr., Leawood, KS 66206

For registration information, contact Leanne Hilligas at: 913-742-4113 or [lhilligas@tfckc.org](mailto:lhilligas@tfckc.org).



**Save the Date!**

**Provider Appreciation Day Celebration**

To thank and honor child care programs for the service they provide young children and their families, The Family Conservancy will host an event on Saturday, May 5, 2018 at the Children's Campus of Kansas City. Please join us for some food, fun and enter to win some great door prizes.

If you are interested in attending, please contact Stacy Hamilton at: 800-755-0838 ext. 1912, or [shamilton@thefamilyconservancy.org](mailto:shamilton@thefamilyconservancy.org).



**REGIONAL STAFF DIRECTORY**

KATRINA MINTER, CCR&R Director  
[kminter@thefamilyconservancy.org](mailto:kminter@thefamilyconservancy.org)

AMY COCHRAN, Early Childhood Wellness Specialist  
[acochran@thefamilyconservancy.org](mailto:acochran@thefamilyconservancy.org)

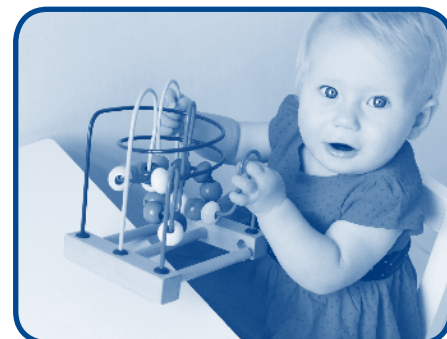
STACY HAMILTON, Data Coordinator  
[shamilton@thefamilyconservancy.org](mailto:shamilton@thefamilyconservancy.org)

JENNA BODENSTEINER, Infant/Toddler Specialist, Strengthening Families Project  
[jbodensteiner@thefamilyconservancy.org](mailto:jbodensteiner@thefamilyconservancy.org)

**Early Childhood Wellness Event**

Join us at the Children's Campus of Kansas City on March 10th for a special day to recognize the importance of wellness in Early Childhood. Participants will enjoy 2 hours of free professional development, refreshments and prizes. Call or go online to register for one of these two trainings being offered: Nutrition Education in Early Care and Education Settings or Go Baby Go – Infants on the Move.

For registration information, contact Stacy Hamilton at: 800-755-0838 ext. 1912 or [shamilton@thefamilyconservancy.org](mailto:shamilton@thefamilyconservancy.org).



Check it out!

Check out these Courses available for ANY CHILD CARE PROVIDER!

## ONLINE Training Opportunities



Date	Course Type	Title	Trainer	Time	Hrs	Cost
1/8/2018	NEW WAVE	Keeping Children Safe: Environment and Transportation Safety	Sherron French	6:00 PM	2	\$15
1/9/2018	NEW WAVE	Cradling Literacy: Families as Partners in Supporting Early Language Literacy	Rachel Jury	6:00 PM	2	\$15
1/17/2018	NEW WAVE	The Creative Curriculum for Preschool: Dramatic Play	Kelly Cain-Swart	6:00 PM	2	\$15
1/17/2018 - 1/24/2018	ONLINE	Beyond the Book Nook: Creating a Literacy Rich Environment	Grace Cott	6:00 PM	3	\$20
1/22/2018	NEW WAVE	Happy Meals: Safe Food Practices and Allergy Awareness	Rachel Jury	6:00 PM	2	\$15
1/23/2018	NEW WAVE	Enhancing Emotional Literacy	Kelly Cain-Swart	6:00 PM	2	\$15
2/6/2018	NEW WAVE	Schedules, Routines, and Transitions	Rachel Jury	6:00 PM	2	\$15
2/7/2018 - 2/14/2018	ONLINE	Director's Toolbox: Conflict in the Workplace	Deb Danielson	6:00 PM	3	\$12
2/10/2018	NEW WAVE	The Creative Curriculum for Preschool: Discovery	Kelly Cain-Swart	9:00 AM	3	\$24
2/10/2018	NEW WAVE	The Creative Curriculum for Preschool: Music and Movement	Kelly Cain-Swart	1:00 PM	3	\$24
2/12/2018	NEW WAVE	Medication Administration in Child Care	Rachel Jury	6:00 PM	2	\$15
2/13/2018	NEW WAVE	The Creative Curriculum for Infants, Toddlers, and Twos: Arrival and Departure Routines	Kelly Cain-Swart	6:00 PM	2	\$15
2/19/2018	NEW WAVE	The Creative Curriculum for Infants, Toddlers, and Twos: Creating with Art	Kelly Cain-Swart	6:00 PM	2	\$15
2/20/2018	NEW WAVE	Involving Families	Debb Homman	6:00 PM	2	\$15
2/26/2018	NEW WAVE	Emergency Preparedness for Child Care Providers	Kendra Pratt	6:00 PM	2	\$15
3/7/2018 - 3/14/2018	ONLINE	The Journey to Independence: Applying Child Development in Daily Practice	Marie Treichel	6:00 PM	3	\$20
3/12/2018	NEW WAVE	Medication Administration in Child Care	Rachel Jury	6:00 PM	2	\$15
3/13/2018	NEW WAVE	The Creative Curriculum for Infants, Toddlers, and Twos: Connecting With Music and Movement	Kelly Cain-Swart	6:00 PM	2	\$15
3/21/2018	NEW WAVE	Food, Fun, and Fitness-It's Berry, Berry Good	Kelly Cain-Swart	6:00 PM	2	\$15
3/26/2018	NEW WAVE	Healthy Environments: Disease Prevention and Control	Denise Singer	6:00 PM	2	\$15



Strong Families Make a Strong Kansas

# Did you know?

**Child Care Aware® of Kansas sends monthly email blasts!**

Send an email to [info@ks.childcareaware.org](mailto:info@ks.childcareaware.org) to get started!

You will receive up to two emails per month with great info for you and the families you serve.

For the latest regional news... don't forget to contact your local CCR&R for more information!

## Let's Ask Licensing!

*Let's Ask Licensing* is an opportunity for child care providers to get clarification surrounding questions they may have regarding regulations for licensed child care programs. Licensing questions in this portion of the newsletter are answered by the Kansas Department of Health and Environment (KDHE), Child Care Licensing.

**QUESTION:** What constitutes an "open door" policy"? Does the provider need to have their door unlocked OR just be open to having people visit at anytime during business hours.

**ANSWER:** K.A.R 28-4-123 specifies parent access. Each parent or guardian of a child enrolled in a day care facility or preschool as defined in K.S.A. 65-517, K.A.R. 28-4-113 or K.A.R. 28-4-420 shall have access to the premises during all hours of operation. Each residential facility as defined in K.A.R. 28-4-311 and K.A.R. 28-4-268 shall develop a plan for parental visitation in cooperation with the legal custodian if different from the parent. It is reasonable to have doors locked if there are safety concerns. Parents are not to be kept waiting at the door nor told they can't come at certain hours. There is a difference between having visitors and allowing parent or surveyor access to the premises.





## Idea Spot

The 2018 Monthly Planners are out! If you have not yet received yours, please contact your CCR&R. And don't forget to visit our website for lots of toolkits and resources.



Kansas Association of  
Child Care Resource and  
Referral Agencies d/b/a



PO Box 2294, Salina, KS 67402

NON PROFIT ORG.  
U.S. POSTAGE  
**PAID**  
SALINA, KS 67401  
PERMIT NO. 122

## CCR&R MAILING ADDRESSES!

- 1 Region ONE**  
1508 E. Iron Ave.  
Salina, KS 67401
- 2 Region TWO**  
1002 S. Oliver St.  
Wichita, KS 67218
- 3 Region THREE**  
1100 SW Wanamaker Rd, Suite 201  
Topeka, KS 66604
- 4 Region FOUR**  
444 Minnesota Ave, Suite 200  
Kansas City, KS 66101

To stay up-to-date on the latest happenings with Child Care Aware® of Kansas and the CCR&Rs, follow us on **FACEBOOK, TWITTER, PINTEREST** and our websites!



## DO YOU HAVE CHILD CARE OPENINGS?

*Update your information to get accurate referrals!*

Name: \_\_\_\_\_  
Address: \_\_\_\_\_  
City: \_\_\_\_\_ Zip: \_\_\_\_\_ County: \_\_\_\_\_  
License #: \_\_\_\_\_ Phone: \_\_\_\_\_  
Email: \_\_\_\_\_

### Type of Care:

☐ Licensed FCC ☐ Group FCC ☐ Child Care Center ☐ Preschool

### Do You Accept DCF?

☐ Yes ☐ No

### Give Referrals?

☐ Yes ☐ No

**DAYS OPEN:** ☐ Mon ☐ Tue ☐ Wed ☐ Thu ☐ Fri ☐ Sat ☐ Sun

Time (Open): \_\_\_\_\_

Time (Close): \_\_\_\_\_

<u>Age</u>	<u>Capacity</u>	<u>Vacancies</u>	<u>Enrolled</u>
Under Age 1 (Infant)	_____	_____	_____
12 - 17 Months (Infant)	_____	_____	_____
18 - 23 Months (Toddler)	_____	_____	_____
Age 2 (Toddler)	_____	_____	_____
Age 3 (Preschool)	_____	_____	_____
Age 4 (Preschool)	_____	_____	_____
Age 5 (School Age)	_____	_____	_____
Age 6 & Over (School Age)	_____	_____	_____

**Please complete and return this form to your local CCR&R!**