

## MOST KANSAS FAMILIES NEED CHILD CARE

According to 2016 Census data, **75%** of Kansas families with children may require care so that the parents can work outside the home. In addition to finding quality child care, these working families must also stretch their budgets to meet the rising cost of child care. The average cost of child care for one infant and one preschooler is a staggering **31%** of a Kansas family's median income. Kansas families, employers and communities need child care that is high quality, affordable, and accessible. For more information about the capacity of child care in Kansas, check out *The 2018 Child Care Supply Demand Report* ([www.ks.childcareaware.org](http://www.ks.childcareaware.org)).

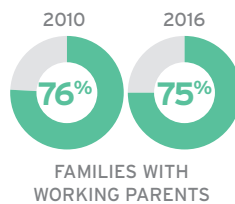
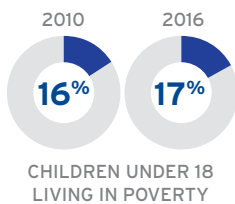
### KANSAS DEMOGRAPHICS

- 15% of children under the age of 6 live in poverty
- Children ages 0-9 make up 14% of the total population of Kansas
- 31% of family households with children under 18 are headed by an unmarried parent (single parent households with children under 18).
- The majority of people are White/Caucasian (85%)
- The median household income is \$53,571
- The average high school graduation rate is 86%
- 31.6% of adults hold a Bachelors degree or higher
- The average unemployment rate is 3.5%

For Data Sources please visit [www.ks.childcareaware.org](http://www.ks.childcareaware.org)

### TRENDS FROM THE 2010 WORKFORCE STUDY

2010 Population	2,853,118	↑ 2%
2016 Population	2,898,292	
2010 Children under 5 years	205,492	↓ 3%
2016 Children under 5 years	198,915	

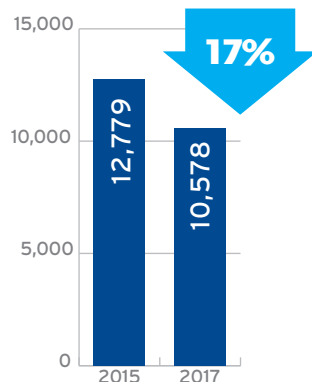


Note: "Families with Working Parents" equals a single parent home with one parent in the labor force or a two-parent home with both parents in the labor force

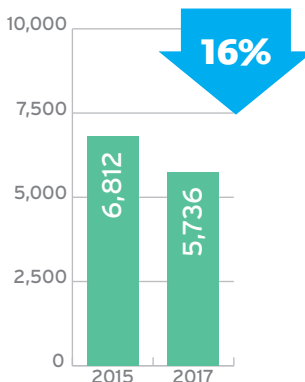
### FINANCIAL SUPPORT

In an average month, infants and toddlers represent about 32% of children receiving child care assistance from the Department for Children and Families.

AVERAGE NUMBER OF CHILDREN SERVED MONTHLY



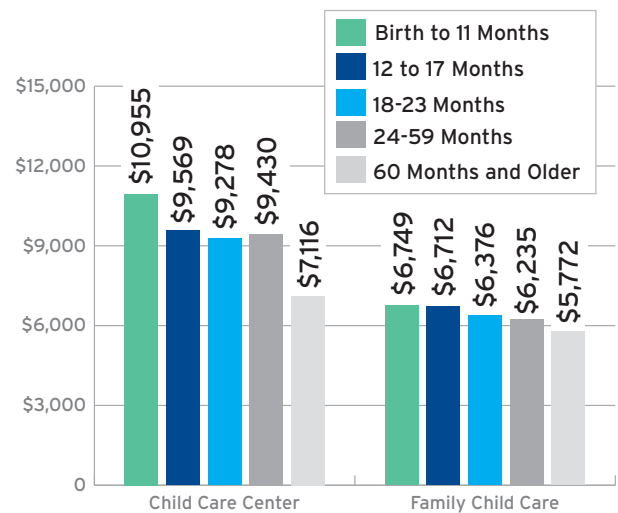
AVERAGE NUMBER OF FAMILIES SERVED MONTHLY



\*Among those surveyed

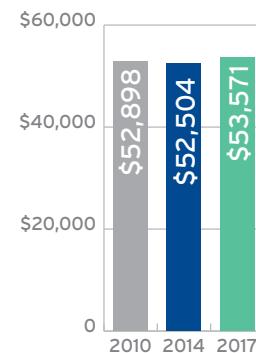
### AFFORDABILITY OF CHILD CARE

While the average cost of family child care in Kansas is typically less than the average cost of care in a center, child care continues to represent a substantial cost for families. The average annual cost of full-time care for an infant in a family child care home represents 13% of the state median household income. The annual cost of full-time care in a child care center represents 20% of the state median household income. The table below indicates the average annual cost of full-time care for one child by age and type of care.

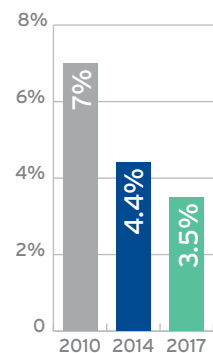


Note: Previous Workforce Study reports group ages as Birth to 11 months, 12-17 months, 18-29 months, 30-59 months, and 60 months and older.

STATE MEDIAN ANNUAL INCOME



STATE UNEMPLOYMENT RATE



**37%**

Family Child Care Owner/Op. with DCF child care subsidy agreements\*

**46%**

Child Care Centers with DCF child care subsidy agreement\*