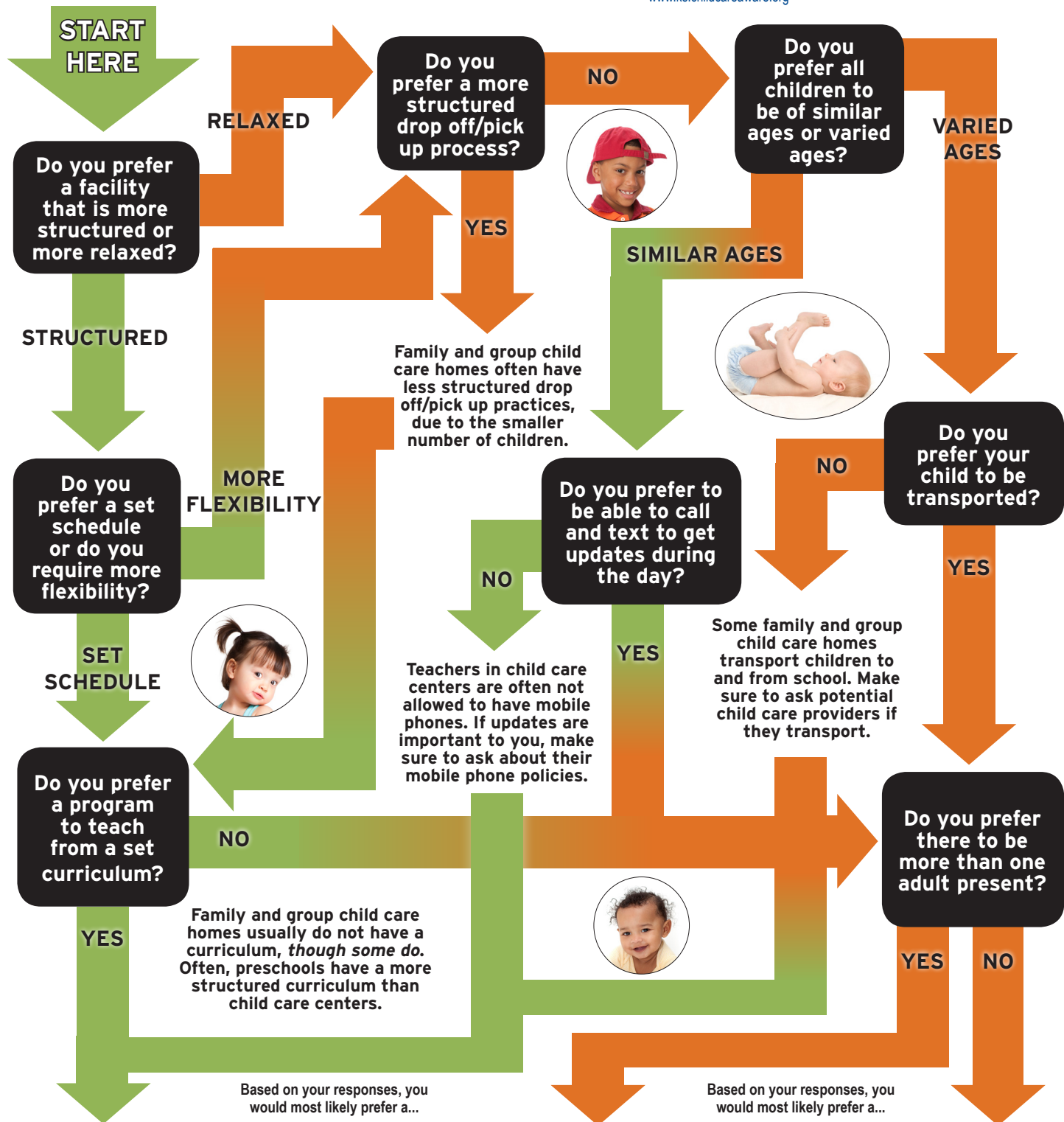


What Type of Child Care Do You Prefer for Your Family?



CHILD CARE CENTER

Most centers separate the children into classrooms by ages. Depending on the number of adults in each classroom, there can be as many as 32 children in a classroom. Typically hours of operation are set and are less flexible with scheduling. Drop off & pick up times are often more structured, due to the large number of children in the facility. It is not uncommon for parents to drop their children off with one teacher and pick up from another.

GROUP CHILD CARE HOME

Most group child care homes have two adults who care for as many as twelve children at one time, depending on the ages of the children, which can vary from infant to school age. It is more common for group child care homes to transport, since there is more than one adult. These facilities are often less structured during drop off/pick up times, and allow for more flexibility in days & times care.

FAMILY CHILD CARE HOME

Family child care homes have one adult who cares for as many as ten children at a time, depending on the ages of the children, which can vary from infant to school age. Some family child care homes transport in order to drop off/pick up school age children. These facilities are often less structured during drop off/pick up, and allow for more flexibility in days & times care.